



# BIDEFORD BUZZ



A free community newsletter for Bideford, Northam, Appledore, Westward Ho!, Lundy and villages west as far as Hartland

## M is for May Events and Morris Dancing

### The beginning of another Summer of Dancing! Why not join us?

#### Dancing in the Dawn

'It's a bit drastic' some say. 'No way' say others. But it certainly is a bit different. It's May the 1st and Bideford Phoenix Morris arrive at the car park by the Kingsley Statue (Bideford Quay) around about 5.30a.m. and start dancing!

We have had all different sorts of weather, but this year is going to be special ... the sun is going to be shining! And this summer is going to be lovely. Last year several Buzz readers arrived to help us bring in the new summer and it was a great summer - thanks to them of course. Why not join us and hope to see you there.

Photo by Carolyn Bennion shows last year's 'Dawn dance.'



#### Bideford Phoenix Morris Programme

**Friday 1st May** - Dancing in the dawn at 5.30a.m.  
Kingsley Statue

**Wednesday 13th May** - Abbotsham Thatch 8.00p.m.

**Saturday 16th May** - Pig on the Hill, Pusehill, Pig  
Roast time 2.00p.m and 3.00p.m.

**Wednesday May 20th** - Crealock Arms, Littleham,  
with Exmoor Border Morris at 8.00p.m.

**Wednesday May 27th** - The Royal Exchange,  
Torrington at 8.00p.m.

**CONTACT  
BUZZ**

Bideford Buzz is produced by a team of volunteers with practical assistance from Torridge District Council, Torridge Voluntary Services, Bideford Town Council, Bideford Bridge Trust, South West Foundation, Devon County Council & Bideford Freemasons. If you are interested in helping to produce or distribute this newsletter we would be pleased to hear from you. Please note that for advertisements there is a charge from £15 per box per month. Cheques payable to Bideford Buzz Newsletter Group. All items for inclusion should be sent by the 15th of the month to the Editor, Rose Arno.

Email: [editor@bidefordbuzz.org.uk](mailto:editor@bidefordbuzz.org.uk), Mobile: 07929 976120 or c/o Torridge Voluntary Services, 14 Bridgeland St., EX39 2QE. Visit [www.bidefordbuzz.org.uk](http://www.bidefordbuzz.org.uk).



Northam Town Council

**Bideford  
Lions**



Bideford  
Freemasons



Bideford Town Council

## Time Capsules and the Port Memorial

Saturday April 11<sup>th</sup> saw an interesting event on the Quay when the restored Port Memorial and Ornamental Gardens were re-opened by the Mayor following refurbishment.

Councillor David Howell had also organised a ceremony with the Sea Scouts to bury a time capsule containing items from local groups and organisations within the town, (including 4 years worth of Bideford Buzz on a memory stick.) The plan is that the capsule will be excavated in 30 years time and will give a snapshot of life in Bideford in 2015.

Councillor Peter Christie described the history of the Port Memorial which commemorates how Bideford regained its port status in 1925 after losing it in 1882. This was echoed in an historical description by the Town Crier.

A rather wonderful terracotta mural has been designed and built by ceramicist **Maggie Curtis**,

and this now forms part of the memorial. Maggie writes :-  
*'Being asked to make commemorative plaques for a public memorial is an honour, but daunting, especially when my knowledge of the history of Bideford Port was sketchy at best. However the research was fascinating; I found out why Harry Juniper called Peter's Marland clay "pipe clay", why, when on holiday in Portugal in 1967 at the Cascois' Fiesta, the prize for the Greasy pole was a salt cod, and why there are so many Americans visiting the North Devon Maritime Museum in Appledore.'*

*I decided to show Bideford's mercantile shipping history by depicting two illustrated trade maps. Bideford's shipbuilding industry played a crucial part in enabling Bideford's merchants to trade, so I researched and found named Bideford built ships though out the history of both Tobacco and Salt Cod and used them to represent the development of each trade and their subsidiary cargos.'*

Interestingly Bideford has two other time capsules in place. Just at the entrance to Victoria Park is the Millennium Time Capsule, buried there in 2000. Another little book, 'Secrets of Bideford' (available at Bideford Library) describes the burying of art works in the fabric of the Quay when the flood defence scheme was completed. Future generations of Bidefordians will have plenty of archive material to peruse!

RA



## Subscribe to Buzz.

### Buzz Subscription

To subscribe send this completed form to Bideford Buzz C/O TTVS 14 Bridgeland Street, Bideford EX39 2QE

Please cut along this line.....

**I would like to pay for a year's subscription/or a six months' subscription to Bideford Buzz. £17 a year or £11 for six months. (delete as appropriate) and make a contribution at the same time.**

I enclose a cheque for £\_\_\_\_\_ made out to Bideford Buzz.

Mr./Mrs \_\_\_\_\_ First Name \_\_\_\_\_ Surname \_\_\_\_\_

Address \_\_\_\_\_

\_\_\_\_\_ Post Code \_\_\_\_\_ Telephone No \_\_\_\_\_

email (optional) \_\_\_\_\_

I am interested in posting Buzz abroad. How much would it cost to sent Buzz to \_\_\_\_\_ for a year or six months.

As a Subscriber please let us know your contact details if different from above.

## Book News.

### 'Mary Barton' by Elizabeth Gaskell.

#### ***Discussed by Bideford Library Readers' Group***

Most of us were familiar with either Victorian novels in general or the work of Mrs Gaskell in particular. Her novels, 'Cranford', and 'North and South' had proved to be popular TV series. Overall the group enjoyed this story but found it unnecessarily drawn out at times and less realistic at the end than at the beginning.

Both the author's father and husband were church ministers and this is reflected in the morality of the tale, a morality common to many Victorian novels. There was also a strong social conscience: Mrs Gaskell had worked with the poor of Manchester and her desire to accurately represent the poverty of industrial Manchester is evident.

The novel paints a dark picture of the horrendous living conditions for the industrial poor in the 1840s, with starvation and premature mortality commonplace. Mary is born into a working class family where her father becomes involved in the early trade union movement. Her beauty is noticed by Harry Carson, from a wealthy mill owning family although she has affections for Jem, a childhood friend. This causes a conflict for Mary: should she marry for wealth or for love?

The first half of the book focuses mainly on the differences between rich and poor, employer and employee. In the second half the tale becomes less political and ends on a sentimental note. One member of the group felt this ending was more like the traditional Victorian novel, concluding with a 'feel-good' factor (unrealistic, compared to the early part of the book?)

A mix of love story, social and political commentary and a murder mystery with a redemptive ending, this book was originally published in two volumes which might explain why the group felt the story to be over-long and in need of a ruthless editor. Nevertheless this book painted a powerful picture of industrial life in the 1840s and had a strong underlying story line despite these shortcomings. **Peter Evans**

Next meeting Bideford Library Readers' Group. Wednesday May 6th 2.00 pm. Discussing *Flight Behaviour* by Barbara Kingsolver

#### **Other Events in Bideford Library For Kids:**

##### **Half Term Crafts**

Tuesday 26<sup>th</sup> May 10am -12 noon  
Free drop in craft session for kids.

##### **Story time for under-fives**

Every Thursday. 9:30-10:00 am (except school holidays)  
With stories, musical instruments and songs.

#### **For Adults:**

##### **Nifty Needles**

Every Thursday. 2 – 4pm  
For anyone who enjoys embroidery, quilting, knitting, crochet and other handcrafts.

##### **Board Games Afternoon**

Every Friday 2 – 5pm  
If you enjoy games like chess, scrabble, backgammon or dominoes come and join other enthusiasts for a game.

**Feel Better with a Book** (please check with library to confirm the group is running each week)  
Every Wednesday 10:30-12:00 am  
Come and lift your mood through the joy of reading! The aim of the groups is to enable you to enjoy the pleasure and relaxation of listening

to great stories and poems - classical and new - and sharing responses with others. No pressure and no reading required. The group is led by an experienced facilitator.



##### **Creative Writing Group**

Saturday May 9<sup>th</sup> 2pm – 4pm  
Creative writing with local author and publisher Nikki Brownson. This is a new group meeting every second Saturday for all aspiring writers looking for inspiration and guidance.

##### **Reminiscence Session – Take a trip down memory lane**

Wednesday May 13th 2:00-3:30 pm  
Remember back... and look forward to sharing your memories with others - chatting, looking at old items, perhaps creating a book of memories together.  
For anyone aged 60+  
Refreshments provided



## Rolle Canal and Northern Devon Waterways Society.

### A Boat Lift on our local canal.

Boat lifts are famous features on many English and continental canals, but how many people are aware that in the nineteenth century there was a boat lift on the Rolle Canal less than 4 miles south of Bideford?

The canal was navigated by tub-boats which were quite small at only 25 feet long, but still carried up to five tons of goods, mostly coal and limestone, inland from the Torridge estuary to Torrington and beyond. To overcome the height difference above sea level, there was a boat lift at Ridd, in the steep side of the Torridge valley opposite Weare Giffard, and this lift took the form of an Inclined Plane.

This was an earthwork comprising a steep slope of about one in six connecting the lower and upper levels of the canal and carried twin tracks of iron rails on which the tub boats ran on small iron wheels. A large underground water wheel provided the power to haul the boats up the slope by means of a continuous chain running on huge sprockets top and bottom. One might wonder why this spectacular mechanism is not a popular tourist site, being situated close to the main A386 road beside the Torridge, but the truth is that the Bideford to Torrington railway built in around 1872 cut right through the old canal features and left very little to be seen.

The Tarka Trail now replaces the railway line and in recent years the Rolle Canal Society, as part of the 'Life's Journey' Heritage Lottery funded project, has been working on clearing the canal basins at the top and bottom of the incline. They have been excavating and exposing some of the remains of the stone vaulted underground wheel pit that was cut through by the railway, and have installed information boards to give people using the Tarka Trail some idea of the feat of engineering that had once been in operation at that location.

On Sunday afternoon **May 17th the Rolle Canal Society will be leading a guided walk from Annery Kiln, by Halfpenny Bridge on the Weare Giffard road, following the route of the canal to the site of the Incline. Here they will point out the layout of the site and explain how it used to operate 150 years ago. The start time is 2:30pm and everyone is welcome, a donation of £2 each being requested to contribute towards the society's restoration work.**

The walk starts off following the canal route across the marsh meadows for a couple of hundred yards but anyone using a mobility scooter can take the Tarka Trail to reach the site of the Inclined Plane itself - - - and of course cyclists or keen walkers can follow the Tarka Trail from Bideford, turning off at the Weare Giffard exit to get to the start.

For any further information please email <hassallc@ymail.com> or telephone me on 01237 425357.

**Chris Hassall.**

## Bideford Pannier Market & Butchers' Row

The Easter entertainment from Entertainingly Different & Captain Coconut was extremely successful bringing locals and visitors to the Market ; unfortunately due to illness the Lambs were unable to attend but perhaps better luck next time With Ed's plants adding more colour and the wonderful scent of the flowers the market hall is looking even more exciting – all the traders are working hard to keep the market vibrant – lots of crafts / toys / books / jewellery / antiques / greetings cards / scarves / handbags / cafe & much, much more – Make sure you support this wonderful Bideford asset – we are not asking you to donate money just come along and support traders - the market is open Tuesdays / Fridays & Saturdays

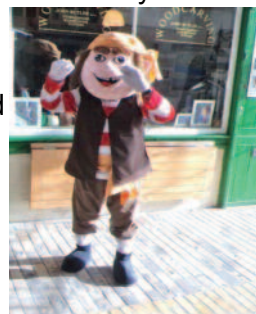
There is always room for additional traders, in particular any one selling fresh produce, so if you would like to explore the opportunities then contact Richard Coombes at the Bideford Town Council on 01237 428817. Stalls available from £3.00 per day if you pay monthly, or £5.00 per day if you just want to do the odd day.

**Butchers' Row** is having a bit of a face lift at the moment with the roof being re-painted inside – there will be some minor disruption but it will be worth it – all the poor old spiders are packing their little suitcases and moving out – I think some of them are older than me they have been there that long (don't tell the council I said that). The Butchers' Row traders will still be open during the painting works so come on up and see us – watch the artisans at work – talk to them ( boy do they love to talk !!! ) We are here Monday to Saturday

Market Place and Grenville Street are open for business Monday to Saturday offering a wide range of shops and services all ready for you to explore and enjoy. There will be another shop unit opening up shortly will bring you more details next time Pannier Pete (see above) enjoyed his afternoon at the Westward Ho! Fish Festival, met lots of lovely people, and made some new friends

Note!! *Might get Pannier Pete to write this next month.*

**Trev Hill ( Minxy's Sweets )**



**Devon Telecom**  
**Telephone Solutions**  
 • **Fast Reliable Broadband** •  
*including BT's new Infinity Network*  
 • **New Line Installations** •  
 • **Wi-Fi** •  
 • **Phone & Line Repairs** •  
**01237 488888**  
 www.devontelecom.co.uk

**ARTEZZANE**  
 Shabby Chic & Pine Furniture  
 Home Décor Painting Service  
 1 Stanhope Terrace, Northam Road, Bideford  
 OPENING HOURS  
 Mon – Fri 09:30 – 5:30  
 Sat 10:00 – 4:00  
 01237 238035  
 Find Artezzane on Facebook & Twitter

**Quaker Meetings for Worship**  
 are held at 17 Honestone St, Bideford  
 (Near Pannier Market)  
**10.30am on Sunday mornings**  
 All are welcome  
 Contact Jackie Poole  
 Tel: 01271 861824

**BIDEFORD FILM SOCIETY**  
Doors open at 7.00pm, films start at 7.30pm  
**Friday 1 May** at 7.30pm and **Sunday 3 May** at 6.00pm at Kingsley School: Insurgent (12A) 119 mins  
**Saturday 2 May** at 7.00pm at Kingsley School: Globe On Screen 2015 Season: Julius Caesar (12A) 167 mins For details see <http://onscreen.shakespearesglobe.com/productions/juliuscaesar/>  
**Friday 8 and Saturday 9 May** at 7.30pm at Bideford College: The Water Diviner (15) 111 mins.  
**Friday 15 and Saturday 16 May** at 7.30pm at Bideford College: X+Y (12A) 111 mins  
**Friday 22 and Saturday 23 May** at 7.30pm at Kingsley School: A Little Chaos (12A) 117 mins  
**Saturday 23 May at 5.00pm and Monday 25 May** at 4.00pm at Kingsley School: The Spongebob Movie: Out of Water (U) 92 mins  
**Friday 29 May** at 7.30pm and **Saturday 30 May** at 5.00pm at Kingsley School: Blind (18) 96 mins

***Slimming*** WORLD  
 Join a warm and friendly group near you today...  
**Tuesday 9.30am or 11.30am**  
 Robins Nest, Bideford AFC  
**Tuesday 3.45pm, 5.30pm or 7.30pm**  
 East the Water School, Bideford  
 Tel: Kate 01409 221873 or 07974 041548

**THE TRUSTY GARDENER**  
 A local, friendly and efficient gardening service offering:  
 • **Garden clear-ups**  
 • **Mowing & lawn laying**  
 • **Pruning, weeding & planting**  
 • **Strimming & pressure washing**  
 • **and more, please ask**  
 For a free quote: call **Mark Turnbull** on **01237 451803**  
 or email [thetrustygardener@gmail.com](mailto:thetrustygardener@gmail.com)

**SAMARITANS**  
 Do you have the skills to be a listening volunteer?  
 Samaritans are recruiting and urgently need people just like you for their branch in Barnstaple, North Devon  
 Samaritans offer a confidential emotional support service which is available 24 hours a day.  
 If you are interested in becoming a listening volunteer, please contact Samaritans on:  
**01271 37 43 43**  
 or email [sams\\_nd@yahoo.co.uk](mailto:sams_nd@yahoo.co.uk)  
 Information Mornings in Barnstaple at 10:00 on 5<sup>th</sup> July & 29<sup>th</sup> Nov.14  
 Real People – Real Lives - Real Difference  
 Charity No. 261807

# PETROC™

## HIGHER EDUCATION

OUR FEES  
ARE LOWER  
THAN  
OVER HALF  
OF THE UK'S  
UNIVERSITIES

OVER **50%**  
of pass rates at 2:1 or First\*



GRADUATES  
SINCE 2001

Dedicated  
**HE**  
facility

Choose from  
over 20  
different  
degree  
courses

\*Based on 2014 Foundation  
Degree results

## HE OPEN EVENT

WEDNESDAY 3 JUNE 2015, 3.30-7.00PM  
PETROC BRANNAMS CAMPUS, ROUNDWELL

IN  
PARTNERSHIP  
WITH  
**PLYMOUTH  
UNIVERSITY**

01271 852366

[www.petroc.ac.uk/he](http://www.petroc.ac.uk/he)

*School isn't a big thing...  
it's a  
**million**  
little things*



**KINGSLEY SCHOOL**  
BIDEFORD

*Outstanding achievements,  
outstanding individuals.*

To book a visit or taster day call  
Caroline Bailey on 01237 426200 or  
[cbailey@kingsleyschoolbideford.co.uk](mailto:cbailey@kingsleyschoolbideford.co.uk)

Kingsley School, Northdown Road, Bideford, Devon, EX39 3LY  
t: 01237 426200 [www.kingsleyschoolbideford.co.uk](http://www.kingsleyschoolbideford.co.uk)

NURSERY | PRE SCHOOL | JUNIOR SCHOOL | SENIOR SCHOOL | SIXTH FORM

## News from the Burton Art Gallery & Museum

To follow the Howard Hodgkin and Vernon Carr Boyle exhibitions, the Gallery is pleased to offer one of the most prestigious collections of drawing in the Country. This is, in fact, the third time the Jerwood Drawing Prize has been hosted by the Burton. Now celebrating its twentieth year, the Jerwood continues to support this particular art, and all works submitted are selected by an artist, a critic and a curator. If you can come to the Gallery on the 9th May, you may join Anita Taylor, the Director of the Jerwood Drawing Prize Project, and Dean of Bath School of Art and Design at Bath Spa University, for a free informal discussion on this particular exhibition and the history of the Prize itself. There are some remarkable drawings, and as always, a stimulant for students striving to achieve better skills.

The exhibition begins on 9th May and ends on 12th June.

If you would like to attend a Day Course, entitled 'Art and Practice', the 8th May might be of interest. If you are a Friend of the Burton, and North Devon Arts' Member, over 60 or a student, the fee is £40, non-members of the above pay £45. Lunch and refreshments are included, and the Chairman is Eilean Eland, Chairman of NDA, and speakers include Anita Taylor, other speakers, and there will be short interactive artist workshops

The Friends are pleased to present a talk on The Bideford Bridge Trust, by its Chairman, historian Peter Christie. This takes place on Thursday 21st May, at 7.30 in the Gallery, £5 at the door. All welcome.

There are still places on the Friends' outing to Torre Abbey on Saturday, 6th June, leaving Bideford Pill at 8.30 a.m., returning around 6.30 p.m. Cost is £12 for the coach. Entry to the Abbey, payable on arrival, £6. Please phone 01237 471455 to book a seat on the coach.

The Gallery shop is full of delights; around every corner something unusual, funny or informative, creative or practical, for old and young, so much to choose from if you are seeking a gift or a treat for a child.

Gallery opening hours: 10am to 4pm, Monday to Saturday; Sunday: 11am to 4pm. Admission Free (donations accepted). Website: [www.burtonartgallery.co.uk](http://www.burtonartgallery.co.uk) to see all that the Burton has to offer.

**Diana Warmington,**

*Friends of the Burton Gallery.*

## Sustainable Fish through the seasons May

There are two Bank Holidays in May and lots of opportunity to eat local sustainable fish and shellfish. The long days enable the fishermen to start catching more regularly and the shellfish pots are all out now, enabling a wide variety of fish to be available. Here is a simple fish curry that is quick to make and you can eat in a bowl outside or feed a crowd if you have visitors for the holidays.



### Thai Fish Curry

#### **Ingredients**

Curry paste (to taste)  
2-3 pieces fresh root ginger peeled and finely chopped  
50g cashew nuts  
400ml can coconut milk  
3 carrots cut in batons  
1 broccoli head, cut into florets  
20g fresh coriander, roughly chopped  
2 handfuls of spinach leaves and /or ransons (wild garlic) chopped  
250g White fish skinned and cubed –Hake or Pollack is a good local choice

1. Put curry paste into a large pan, add the ginger and nuts and stir fry over a medium heat for 2-3mins.
2. Add coconut milk, cover and bring to the boil. Stir in the carrots, then reduce the heat and simmer for 5mins. Add the broccoli florets and simmer for a further 5 mins.
3. Cut the fillets of fish into cubes, add and simmer gently until the vegetables are tender-no more than 10 mins.
4. Take off heat and stir in the coriander and lime zest into the pan with the spinach or wild garlic. Squeeze the lime juice over and serve with boiled rice and garnish with coriander leaves -Simple!!

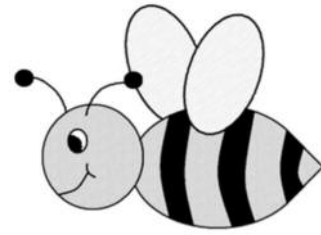
There are more Summer Festivals with a Fish/Water theme and The Appledore Fish Summer School group has a stall at the Northam May Fair and the Bradworthy Arts Festival. Please come and find out about the Events and buy some fish for tea!

**Felicity Sylvester**



# Buzz Word ...

## *send us your Buzzes*



### **Decline and fail.** (on May 7th)

I know that “Buzz” is an a-political ‘moan-free zone’, but it may be helpful to remind ourselves in a non-partisan way of the importance of our vote. There are veritable oceans of spin, PR, soundbites, and economy-with-the-truth surrounding us at present. As a result it appears that we, the people, have very little trust in politics or politicians. It could be useful to consider the following definitions and quotes.

### **Democracy.**

noun ( pl. democracies ) [ mass noun ]

a system of government by the whole population or all the eligible members of a state, typically through elected representatives: a system of parliamentary democracy.

- [ count noun ] a state governed under a system of democracy: a multiparty democracy.
- control of an organization or group by the majority of its members: the intended extension of industrial democracy.
- the practice or principles of social equality: demands for greater democracy.

ORIGIN late 16th cent.: from French *démocratie*, via late Latin from Greek *dēmokratia*, from *dēmos* ‘the people’ + *-kratia* ‘power, rule’. (ODE).

*“People went to their graves so you could vote. You can be the balance of power. ....you can strike a blow for freedom in May and help change the destiny of this country. Your strength will not come from Downing Street down, but from your street up.” - Rev Al Sharpton.*

### **Apathy**

noun [ mass noun ]

lack of interest, enthusiasm, or concern.

ORIGIN early 17th cent.: from French *apathie*, via Latin from Greek *apatheia*, from *apathēs* ‘without feeling’, from *a-* ‘without’ + *pathos* ‘suffering’. (ODE).

*“.....a rather stinging indictment on the political system which media and political insiders love to glorify: a huge chunk of the population, probably the majority, have simply turned away entirely from politics, presumably out of a belief that it makes no difference in their lives. It’s difficult to maintain mythologies about the glories of democracy if most of the population believes it has so little value that it merits literally none of their time and mental attention.” - Glen Greenwald.*

So I would just say that democracy as a system of government is only valid if the population participates, and the smaller the proportion of participants the less valid the system - a very dangerous route. People themselves build the future, not opinion-formers : form your own and express it by voting.  
**TA**

### **Thomas Arthur**

Following up the extremely interesting piece by Chris Trigger about Thomas Arthur, readers might be interested to learn a bit more about the Abbotsham connection. Thomas was baptised in St Helen's Church in the village in August 1836. His two elder sisters, Catherine and Fanny had been baptised there in March 1833, but there is no record of his parents, Jane and Thomas, having been married there, so it is probable that they moved to Abbotsham from elsewhere. Thomas' father appears to have died before his son was born as the Parish register records the funeral of a Thomas Arthur (s) in 1836. (all the Parish records show the family as Arthurs.) It is possible that Thomas' mother married again later in life as a Jane Arthur (s) married a John Dinford at St Helen's in November 1847.

In St Helen's Churchyard, by the foot of the cross commemorating the war dead is a small plaque dedicated to Thomas Arthur as one of the first soldiers ever to receive a VC for his valour in war. There is also a small housing development named 'Arthur's Lea' in his memory.

**Martin Wilson** Abbotsham Community Archive



# Herbert Henry Asquith



## A Ship Sails up to Bideford

A ship sails up to Bideford;  
Upon a western breeze,  
Mast by mast, sail over sail,  
She rises from the seas,  
And sights the hills of Devon  
And the misty English trees.

She comes from Eastern islands;  
The sun is in her hold;  
She bears the fruit of Jaffa,  
Dates, oranges and gold;

She brings the silk of China,  
And bales of Persian dyes,  
And birds with sparkling feathers  
And snakes with diamond eyes.

She's gliding in the starlight  
As white as any gull;  
The east is gliding with her  
In the shadows of her hull.

A ship sails up to Bideford;  
Upon a western breeze,  
With fruits of Eastern summers  
She rises from the seas,  
And sights the hills of Devon  
And the misty English trees.

I am a native Bidefordian, and have to confess that I only came across this poem by Herbert Ashley Asquith by accident, whilst researching something completely different. Its author was the second son of the Liberal Prime Minister, Herbert Henry Asquith (1908-1916), with whom he was often confused, and about whom not an awful lot has been written. Born in 1881, he was nicknamed 'Beb' by his family. He was educated at Winchester College with his brothers, then went to Oxford, where he was President of the Oxford Union, and afterwards became a lawyer, novelist and poet. In 1910, he married Cynthia Charteris, who was herself a writer. He served as Captain with the Royal Artillery in France during the First World War; several of his best poems are about the soldiers who died.

He would have had plenty of opportunity to visit Bideford during his life. His father often accepted invitations by Mrs Hamlyn to house-parties held at Clovelly Court whilst he was Prime Minister. At a later date, his younger brother, Arthur, married the inheratrix to the

Clovelly Court estate, (Mrs Hamlyn having died with no direct heirs), and to which he retired at the end of the war, after a distinguished war career, and where he lived until his death in 1939.

His older brother, Raymond, was sadly killed during the First World War.

Herbert Ashley died in 1947. His father, the Prime Minister, was later made the 1st Earl of Oxford and Asquith.

It is a rather fine poem; (there are others to be found on the internet.) The North Devon folk group 'Hearts of Oak', sadly now defunct, set it to music, where it gained a regular place in their repertoire, and can still be found on YouTube.

**Chris Trigger**

*Part of our Connections Series.*

## Devon Family History Society

Members meet at Pollyfield on the **3rd Saturday afternoon each month at 2pm**. There is usually a talk on a related topic by an enthusiastic and entertaining speaker, then often a short talk by a local member on a topic from their family history. All the members are keenly interested in family history and having started searching their ancestors, they gain research skills and ask questions, making friends and sharing knowledge. Some will be at the local library occasionally, helping the public with their own family "who do you think you are?" questions. Some members enjoy reading old parish records and spend the odd hour transcribing local handwritten records onto their computer. Some enjoy poking round old gravestones and taking photographs of them, which also may appear online.

There is renewed interest in the activities of WW1 relatives who 100 years ago this month were fighting in Belgium. My own grandfather (then 18), kept a pencilled diary which records - March 10th 1915, battle of Neuve Chappelle, we captured the village and enemy trenches. Our own lives may not be so violent, but everything we do is potentially part of the history of our family. For this reason it is important to North Devon people that the local records of families should perhaps not be carted off to Exeter or Plymouth, just to make more office space for the folks from the civic centre.

**The May 16th meeting** is a visit to the SW Area Group Family History Fair in Weston super Mare. New members are always welcome. You do not have to be born in Devon to join. Our members come from all over the country. For more details phone **01237 451305**

## Party all night ( Or till 12 o'clock at the absolute earliest...)

Just like Easter is the light at the end of a long tunnel of fasting for many at Lent ( though if you're actually seeing the light, you may have had enough of those small chocolate mousse-eggs. Mousses don't lay eggs often, but when they do it's a magical occurrence) those in the Bideford College sixth form got one final party out the way before embarking on a laborious month of revision, in time for the exams in May.

The theme was Good .vs. Evil, which explains all the cowboys, highwaymen and Mafiosi comparing bloody bullet holes with batman villains over a Red Bull, less so the two slow-dancing bananas in the middle of the floor- but then, their saintly potassium content probably swayed them over to the "good" side- which is just as well really, because "Good" had far fewer members. Everyone there was caught up in the spirit of the thing- even the three burly doormen who must have been intensely miffed to find they weren't the only one with that costume idea, and no one simply came "as themselves, but on an evil day." It also wasn't the usual case of a shifty school dance, where five people jig about a bit in the centre and everyone else watches; it was a full four hours of screeched singing, mass dancing, and lemon-flavoured smoke machines that went a little out of control from time to time; woe betide you if you were doing "oops upside your head" in front of the nozzle, but those of us in a cape or poncho could really waft around in it. Near midnight, the evening wound down, and the strange conglomeration of heroes and villains bumbled away again into the darkness.

As well as a swansong for the free time and excitement that'll have to be put on hold for a while, in order to concentrate fully on the final set of A-levels you've been working towards for the past year, it was also a good opportunity to burn yourself out for a few days. Parties like this need a long recuperation time, so people won't have energy for anything other than some maths revision, and a skim through the Russian Revolution in between naps. It seems the best way to enjoy revision is when it's an excuse not to do anything else; more like pancake day than Easter then, as you make yourself sick before lent, so the sweet treats and the chocolate are even easier to give up for a the long spell ahead.



Last month saw the **Burton Art Gallery's** exhibition of Howard Hodgkin's 'Green Thoughts'. All inspired by some aspect of the surrounding country-side from 'Storm cloud' to 'Sundown', the 19 limited editions on display were made using carborundum relief and hand painting.

The lush, vibrant colours and vital paint strokes speak to the viewer- though mostly it's questions like, "What kind of storm clouds does Howard Hodgkin ogle?" and "I love the nice driftwood border he's drawn, and this coastal delight of sea and sand, but why is the moon crying in a corner?" They're abstract pieces, but they do require a bit of thought if you want to understand their underlying meaning. Otherwise, it's just satisfying to take a step back from the wall and blur your eyes- let them eat up the feast of texture and hues, and not really worry what the peeling amoebas/raindrops are up to. And they really are a treat to look at, because Hodgkin's managed to blend the spontaneity of nature- overlapping lines, and unconfined drips, but also kept the raw power or energy of what he's trying to convey- be it raging conditions out at sea, or a calm, clear sunrise over rolling rural corn fields, a sense of this is all oozing from the works.

Inspired by Andrew Marvell's 17th century poem 'The Garden' if that's what we have to thank for these 19 limited editions, then we may well become Andrew Marvell fans as a result...

*Millie Sutherland O'Gara*

I have a garden of my own, But so with roses  
overgrown, And lilies, that you would it guess To  
be a little wilderness.

(Andrew Marvell)

izquotes.com

# Charity News.

## Northam Lodge

This year we are holding two different boating events. Reminder to get your tickets for the MS Oldenburg Mid-Summer Cruise on Friday June 5th Departing Bideford Quay 7.15 for a two hour cruise with The Alan Lewis All Stars Jazz Band – £15 pp Bring a picnic – bar on board for ALL refreshments

**or for the more adventurous** RHIB Powerboat rides courtesy of Skern Lodge

From Appledore Quay Sunday June 28th 12.00 – 4.30pm Half hour rides for 8 people @ £15 adult, children (7-16) £10 Bookings available for hire of whole boat with discount for last 2 rides

To find out more and to reserve a place on either Boat trip please contact Annabel on 01237.477238 or annabelcope@northamlodge.co.uk

## Bideford Freemasons Proudly Present

A GALA CHARITY CONCERT

Starring MILITARY WIVES CHOIR(Chivenor)

Torridge Male Voice Choir

Special Guest Tamsin Ball

and a “Last Night at the Proms” Finale Led by Appledore Silver Band

Friday July 10th 2015 @ 7.30 p.m.

**Devon Hall, Bideford College**

Tickets £20 In Support of N.D.D.H. Chemotherapy Appeal

The Military Wives Choir Foundation (Reg. Charity 1148302)

Devon Mark Charity Association (Mobile Chemotherapy Unit **Tickets** available from Bideford College Box Office Monday to Friday : 4.30 to 9pm

**Tel: 01237 429535 and Raphael, 50 Mill Street Bideford**

**Free parking available for 200 cars, Licensed Bar**

## The Little Princess Trust

Kelsey Allum 11 years of age and an Altar Server at the Holy Family and Sacred Heart Roman Catholic Churches - Torrington and Bideford, on 13th April 2015, decided to raise funds for **The Little Princess Trust**, who provide real hair wigs for boys and girls across the UK and Ireland that have sadly lost their own hair through cancer treatment; she donated her beautiful hair for this worthy cause. The sum of £400 was raised through sponsorship and was forwarded together with her plaited hair.

Many thanks to Hair Stylist Teresa Rice-Smith for her generous support....the re-styling of Kelsey's hair was perfect.

**Well done Kelsey - YOU ARE A STAR**

**Paul Smith, Chairman.**

## Nightwalk

This ladies-only moonlit walk has always had a very special atmosphere; there is still time to join us for the most spectacular Nightwalk yet, as we walk together in support of North Devon Hospice. So please, join us on **Saturday 16<sup>th</sup> May**. The funds that you raise will help North Devon Hospice provide our essential care to local people. Every pound will make a positive difference to local families who are faced with cancer or other life-limiting illnesses.

To register yourself, your family or your friends, please visit [www.nightwalk.co.uk](http://www.nightwalk.co.uk) or phone 01271 347232 for an application.

**Clovelly Lifeboat** As part of the National RNLI Mayday activities we are opening our Lifeboat Station to the public on Saturday 2nd and Sunday 3rd of May. We invite you to come and meet station personnel, look around the station and have a guided tour of our Atlantic 85 Inshore Lifeboat, Toby Rundle. Then finish off with some famous Fundraising Branch Refreshments! All we ask is for a donation to the RNLI.



# These are some of your ideas of what is the Bee's Knees in Bideford

- Sprucing up the **Oldenburg** for the coming season. Nice day for it too...  
*Simon Allison.*
- New service at **Bidebay** is great. The lady who runs it lists items for customers on eBay and has them available in her shop. Totally takes the hassle out of selling on eBay and you have an eclectic mix of ever changing items to browse in her shop.  
*ClairSarah Srisaeng*
- **Shark-ade** at Bideford Pannier Market Butchers' Row is amazing ; not only offers free play of machines all hand build, but work experience for school and college kids plus free advice on PC/laptop etc laptop and PC fixes builds and much more.  
*Claire May*
- **Quay Cafe** Love it there. I always feel welcome great food .  
*Donna Paterson*
- **Bideford Town Band** -  
*Nicola Ashelford*
- **Cafe Onboard**. Only discovered it today. Really friendly and totally unique  
*Alison Campbell*
- In my opinion, what makes Bideford special is the **panoramic view** you get, when you approach it from the Torridge Bridge, coming up on the Link Road. The journey from Tiverton onwards is, to say the least, dull, but when you get to Bideford the vista opens out, especially on a sunny day, onto a kaleidoscope of colour, and The Little White Town takes on an almost Mediterranean appearance. The sight of the town and the quay to your right, and the woods and river to your left, right and below is breathtaking, a picture by Picasso come to life. Of course, there is much else going on in Bideford of which we can be proud, but the beauty of the town itself is its primary asset, especially from this particular viewpoint.  
*Chris Trigger.*



**Keep them coming in. More next month. Send to [editor@bidefordbuzz.org.uk](mailto:editor@bidefordbuzz.org.uk) or post on our Facebook page, or at [www.bidefordbuzz.org.uk](http://www.bidefordbuzz.org.uk).**







# THE SHIPPING NEWS



Ship <i>Loaded at Bideford</i>	Registered flag owners	From	To	Arrived	Sailed 20/3/15	Crew	Cargo
<b>Marley *</b> Built 1995 <b>ex Disburg 95</b> <b>Annleng 96</b> <b>Ardesco 08</b>	Belgium Antwerp Belgian	Newport	Castellon	<b>19/3/15</b>		Ukrainian Russian	2730 tons ball clay.
<i>Discharged at Yelland</i>							
<b>Aberdeen</b> Built 2009 <b>ex Stortebeker 09</b> <b>Wilson Aberdeen 14</b>	Malta Valletta German	Glensanda	Briton Ferry	<b>08/04/15</b>	<b>09/04/15</b>	Russian Ukrainian	3500 tons chippings
<b>Kaie</b> Built 1990 <b>ex Eversmeer 05</b> <b>Cady 97</b> <b>Skagen 83</b>	Malta Valletta Estonia	Glensanda	Antwerp	<b>08/04/15</b>	<b>08/04/15</b>	Russian Ukrainian	4012 tins chippings

Vessel **Roseburg** due to load timber between **16/21st** Spring tide period

\*Understand from Capt Hoad that the children of Tawstock School visited the Quay area and saw the loading ;they enjoyed the day, according to their teacher Jayne.

Trinity House vessel **Mair** alongside Bideford Quay **9.3.15** for work on their equipment on the Torridge Bridge and also at Barnstaple.

**Welsh Piper** at Yelland **6.4.15**

## Activity at Appledore

The Irish Patrol vessel **Le James Joyce** unfortunately did not sail until the Spring HW period **16/21 April** for her home port of Cork, due to problems with the propellers.

Tug **Strathdon** with barge Ur 96 (Owners Uglands) arrived at the shipyard on the 24/3/15 to load pieces of the second aircraft carrier **HMS Prince Charles** being constructed at Rosyth. The barge came out of the building shed on the **2.4.15** but could not sail due to swell in the bay . She finally departed on the **4/4/15** approx 18.30 with a large crowd on Appledore seafront to see her depart ; according to her AIS tracking she was proceeding north via the Pentland Firth and arrived off Rosyth 6.6 days after leaving Appledore.

**Arco Dart** at Appledore **19.3.15 20.3.15 21.3.15**

## Bristol Channel Observations

**21.3.15** at 15.02 cargo vessel **Albiz** 5750 tons d.w, owners Muruera Naviera Spain, outward bound from Sharpness, having sailed at 08.21. At 16.02 cargo vessel **Merel V** 3200 tons d.w, owners Veltman H Netherlands, outward bound from Sharpness having sailed at 08.11 . At 18.00 cargo vessel **Iryda** 34946 tons d.w, owners Iryda Shipping Poland, inward bound for Portbury.

**22.3.15** at 13.51 cargo vessel **Nicole C** 5000 tons d.w, owners Carisbrooke Shipping Cowes I.O.W. inward bound for Avonmouth. At.15.06 Vehicle carrier **Venus Spirit** 13951 tons d.w owners inward bound for Portbury.

**23.3.15** at 16.20 cargo vessel **Fri Karmsund** 5935 tons d.w owners Fri Karmsund AS Norway, outward bound from Newport, having sailed at 10.50.

**27.3.15** at 1703 hrs vehicle carrier **Autosun** 6670 tons d.w, owners United European Car Carriers Norway, inward bound for Portbury

**28.3.15** at 09.31 vehicle carrier **Autopride** 4442 tons d.w, owners United European Car Carriers Norway I outward bound from Portbury, having sailed at 01.32.

**30.3.15** at 11.33 cargo vessel **Scot Isle** 3154 tons d.w, owners Scot Line Ltd U.K, inward bound for Newport.

**31.3.15** at 10.47 chemical tanker **Stolt Greenshank** 4350 tons owners Brovig Stainless AS Rotterdam inward bound for Barry.

**1.4.15** at 12.35 vehicle carrier **Grande Mediterraneo** 18427 tons d.w owners Grimaldi Line of Italy inward bound for Portbury. At 15.50 cargo vessel **Clipper Triumph** 30471 tons d.w, owners Clipping Group Management Bermuda, inward bound for Newport.

**9.4.15** at 17.27 vehicle carrier **Autosun** 6670 tons d.w, owners United European Car Carriers Norway,inward bound for Portbury.

**11.4.15** . At 15.08 cargo vessel **Vlieland** 6000 tons d.w, owners Vlieland Shipping Netherlands, inward bound for Swansea . At 18.50 cargo vessel **Lowlands Brabo** 32280 tons d.w, owners Sea Wealth Navigation SA, inward bound for Portbury.

**12.4.15** at 11.43 cargo vessel **Sir Henry** 18315 tons d.w, owners Revenge Shipping, Athens Greece inward bound for Newport

Regards **Norman**

# BIDEFORD COMMUNITY ARCHIVE

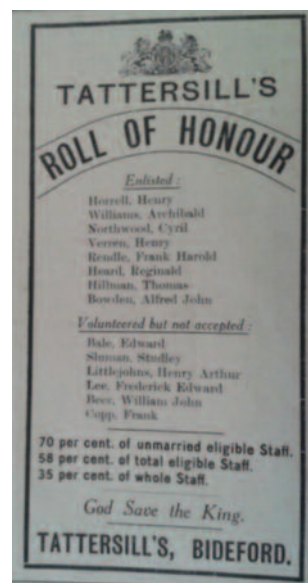
## **100 YEARS AGO - May 1915**

At the Annual meeting of the Bideford Workhouse Guardians it was announced that 26 meetings were held during the year and only 4 of the elected Guardians had attended all meetings. Some had only been present at 10 meetings and one person had only made one attendance. The War has had an effect on the number of tramps calling overnight, falling from 80 the previous year to 37 and the numbers of men fully employed or going off to fight has caused the casual numbers to fall from 2220 to 1548.

Over the Whitsun holidays, May 22/23<sup>rd</sup>, traffic has fallen by a half. No railway excursions were run and with over 3000 men from North Devon off to war families stayed at home.

George Boyle, Motor Cycle and Bicycle agent of Allhalland Street and Queen Street, warns of a "dearth of bicycles" due to the scarcity of raw materials and shortages of manpower.

Recruiting at Bideford is quoted as being similar to or better than other towns. 540 men have enlisted and have gone to the Devonshire Territorials who are now garrisoned in India or to the Devon Yeomanry who are defending the east coast against possible invasion. A recruiting march was organised around North Devon which stopped overnight in Bideford. 130 men were recruited into the 6<sup>th</sup> Battalion Devonshire Regiment but more are needed. Currently there are 370 men between the ages of 18 and 38, fit or unfit, in the town. There is reluctance to volunteer, many saying that they will "Go if conscripted but not voluntarily". Tattersill's, the grocers in the town, had the advertisement (as shown) during May which seemed to reflect this growing unease generated by the war.



### *In other news:*

For Sale at Pines Lane Bideford, 16 acres of luxuriant grass and farming implements together with one Guernsey cow in full milk. Offered by the Executors of the late H Arscott JP.

The town water supply is giving concern again. Supply is dwindling and Bideford Urban District councillors are debating whether to turn off the supply overnight.

Farleigh's Stores in High Street are selling "tempting little breakfast hams" at 7d a pound. Miss A Littlejohns of York Cottage will give lessons in the new method of "Touch" typing.

*This and other items of interest are available from Bideford & District Community Archive, Windmill Lane, Northam. Tel: 01237 471714*

## **Northam Choral Society**

Our local choir which sings classical choral music, The Northam Choral Society, is having its Spring Concert on Saturday May 16th at 7.30pm in Kingsley School (Edgehill College Theatre) in partnership with the Hartland Chamber Orchestra. We should like to invite Buzz readers to come along and join us. Tickets at the door are £8. Our choir is conducted by our musical director, Michael James, and we shall present to you *Song of Destiny (Schicksalslied)* by Brahms, and *Requiem* by John Rutter (soloist: Tina Gladwin). In addition, the orchestra will play pieces by Mendelssohn and Elgar. Refreshments will be offered during the interval. Do come, and help to keep classical music alive in our town!

**Paul Smith**

## May Diary

### Friday 1<sup>st</sup>

**5.30am** Bideford Phoenix Morris 'Dancing in the Dawn'  
**7.45pm** Modern Sequence Dancing, Kingsley Hall, W Ho! 01769 540309  
**8pm** Ceilidh Club, Northam Hall. 476632

### Saturday 2<sup>nd</sup>

Instow School & Community Scarecrow Trail.

**9am-2pm** Farmers Country Market at Atlantic Village

**2-4.30pm** Clovelly WI Spring Bazaar at Parish Hall. 429388

**7.00pm** Film Club at Littleham Village Hall. 471928

**7.30pm** Spring Charity Dance with Bet & Audrey at Woolser Community Centre

### Sunday 3<sup>rd</sup>

Instow School & Community Scarecrow Trail.

### Monday 4<sup>th</sup> – Bank Holiday

Instow School & Community Scarecrow Trail.

### Tuesday 5<sup>th</sup>

**10am-1pm** Lavington Church coffee and lunches

**10.30am** Walking for Health. 421528

**2pm** Bideford WI at Sea Cadet Bldg.

**2-3.30pm** Salvation Army 'Fun & Fellowship' Club meets at Baptist Church Upper Hall.

**6.30pm** Bideford Band Beginner's Group at Band Room. 475653

**7pm** Torridge Ramblers evening walk. 239129

**7.30pm** Northam Choral Society rehearses at Northam Methodist Hall.

**7.30pm** Bideford Sustainability Group at Blacksmiths Arms

**7.30pm** Bideford Keyboard & Organ Club at Bideford Methodist Church Hall

**8pm** Torridge Male Voice Choir meets at Woolser Village Hall. 470913  
 Palladium Club *Jam Night*

### Wednesday 6<sup>th</sup>

**9.30am-2.30pm** Free Social Club for ages 19+ at Happy Café, Westward Ho!  
**10am-12pm** Bideford Healing Group at Sea Cadets Bldg in Victoria Park.

**10.30am** Parkinson's UK coffee morning at Ethelwynne Brown Close. 478128

**10.30am** Walking for Health in Victoria Park. Meet at Cafe du Parc. 421528

**11am-1pm** Creative (Memory) Café at Quay Meeting Rm, 5 Danver Court, Clovelly Rd Ind Estate. 07817976053

**1.30-3.30pm** Knit & Natter Group at St Margaret's Church, Northam.

**2pm** Bideford Library Readers' Group. 476075

**2pm** Tea with Friends at St Mary's Church

**7.30pm** The Two Rivers Wind Ensemble Rehearsal at Bideford Band

Room.

### Thursday 7<sup>th</sup>

**10.15am** Northam Men's Forum 'End of Season Lunch'. 479917

**10.30am** Walking for Health along Tarka Trail. Clarence Wharf Car Park. 421528

**11am** Coast & Country Walkers. Dartmoor 7 miles. 421883

**2-4pm** See Hear on Wheels (SHoW) bus at Pill Car Park. 01271 373236

**7pm** Hartland Aikido Club for over 18s at Bucks Cross Village Hall.

**7.30-9pm** Samba Baia Rehearsal at Community Arts Network, 13 Rope Walk. New members welcome.

### Friday 8<sup>th</sup>

**7.30pm** Abbotsham WI meets at Abbotsham Village Hall. 474711

**7.45pm** Modern Sequence Dancing, Kingsley Hall, W Ho! 01769 540309

**8pm** Ceilidh Club, Northam Hall. 476632

### Saturday 9<sup>th</sup>

**9am-2pm** Bideford Farmers' Market on the Quay.

**10am** Torridge Ramblers Day Walk. 429080

**10am-4pm** Arts & Crafts Fair + Vintage Teas at Abbotsham Village Hall. 475746

**Coffee Morning** at 1 Francis Drive, W Ho! in aid of David Rundle Trust. 477470

### Monday 11<sup>th</sup>

**10am-12pm** Appledore Community Art Group at Appledore Community Hall.

**6.45pm** Breakaway Social Club for adults with learning/physical disabilities.

**7.15pm** Appledore Singers rehearse at Appledore Baptist Church. 420652

**7.30pm** Bideford Stamp Club at Kingsley Hall, Westward Ho! 472101

**8.30pm** North Devon Jazz Club at the Beaver, Appledore. Chris Biscoe & Ralph Freeman Trio.

### Tuesday 12<sup>th</sup>

**10am** Macular Society meets at Burton Art Gallery. 474128

**10am-1pm** Lavington Church coffee and lunches

**10.30am** Walking for Health. 421528

**2-3.30pm** Salvation Army 'Fun & Fellowship' Club meets at Baptist Church Upper Hall.

**6.30pm** Bideford Band Beginner's Group at Band Room. 475653

**7.30pm** Northam Choral Society rehearses at Northam Methodist Hall.

**7.30pm** Lions Club meet at Royal Hotel

**7.30pm** Bideford & District Gardeners Club at Bideford Methodist Church Hall. 475914

**8pm** Torridge Male Voice Choir meets at Woolser Village Hall. 470913

Palladium Club *Jam Night*

### Wednesday 13<sup>th</sup>

**9.30am-2.30pm** Free Social Club for ages 19+ at Happy Café, W Ho!

**10am-12pm** Bideford Healing Group at Sea Cadets Bldg in Victoria Park.

**10.30am** Walking for Health in Victoria Park. Meet at Cafe du Parc. 421528

**2.30-4pm** See Hear on Wheels (SHoW) at Northam Community Centre.

**4-6pm** Sew Together at Northam Library **7.30pm** Bideford Folk Dance Club at Northam Hall. 423554.

**7.30pm** Two Rivers Wind Ensemble Rehearsal at Bideford Band Room

**8pm** Fashion Show for Cancer Research UK at Littleham Village Hall. 421461

**8pm** Bideford Phoenix Morris at Thatched Inn, Abbotsham

### Thursday 14<sup>th</sup>

**10.30am** Walking for Health along Tarka Trail. Clarence Wharf Car Park. 421528

**7pm** Hartland Aikido Club for over 18s at Bucks Cross Village Hall.

**7.30-9pm** Samba Baia Rehearsal at Community Arts Network, 13 Rope Walk. New members welcome.

### Friday 15<sup>th</sup>

Devonshire Assn – Summer visit to Exmoor.

**10am-12pm** Northam Reminiscence café at Northam Hall. 459337

**7.45pm** Modern Sequence Dancing, Kingsley Hall, W Ho! 01769 540309

**8pm** Ceilidh Club, Northam Hall. 476632

### Saturday 16<sup>th</sup>

**9am-2pm** Farmers Country Market at Atlantic Village

**10am-3pm** Buckland Brewer Annual Plant Sale

Devon Family History Society - trip to SW Area Group Family History Fair at Weston-super-Mare. 451305

**2pm & 3pm** Bideford Phoenix Morris at Pig on the Hill, Pusehill

**7.30pm** Northam Choral Society + Hartland Chamber Orchestra Concert at Kingsley School.

**Nightwalk** – for North Devon Hospice.

### Sunday 17<sup>th</sup>

**11am-3pm** Buckland Brewer Annual Plant Sale

**1.30pm** Torridge Ramblers walk. 451820

**2.30pm** Rolle Canal short history walk from Annery Kiln to Ridd Incline. 425357

### Monday 18<sup>th</sup>

**10am-12pm** Appledore Community Art Group at Appledore Community Hall.

**2pm** Bideford Ladies Club, Marlborough Court. 421925

**6.45pm** Breakaway Social Club for adults with learning/physical disabilities.

**7.15pm** Appledore Singers rehearse at Appledore Baptist Church. 420652



# May Diary 2015 *continued*

**7.30pm** Appledore Amateur Radio Club, Fellowship' Club meets at Baptist Appledore Football Social Club. 473251 Church Upper Hall.

## **Tuesday 19<sup>th</sup>**

**10am-1pm** Lavington Church coffee and lunches

**10.30am** Walking for Health. 421528

**2-3.30pm** Salvation Army 'Fun & Fellowship' Club meets at Baptist Church Upper Hall.

**3pm** 'Reflections' Grief & Loss Group at St Mary's Church. 475765

**6.30pm** Bideford Band Beginner's Group at Band Room. 475653

**7.30pm** 'Making Bideford more cycle friendly' at St Mary's School.

**8pm** Torridge Male Voice Choir meets at Woolserly Village Hall. 470913  
Palladium Club *Jam Night*

## **Wednesday 20<sup>th</sup>**

**9.30am-2.30pm** Free Social Club for ages 19+ at Happy Café, W Ho!

**10am-12pm** Bideford Healing Group at Sea Cadets Bldg in Victoria Park.

**10.30am** Walking for Health in Victoria Park. Meet at Cafe du Parc. 421528

**11am-1pm** Creative (Memory) Café at Quay Meeting Rm, 5 Danver Court, Clovelly Rd Ind Estate. 07817976053

**1.30-3.30pm** Knit & Natter Group at St Margaret's Church, Northam.

**7.30pm** Bideford Folk Dance Club at Northam Hall. 423554

**7.30pm** Two Rivers Wind Ensemble Rehearsal at Bideford Band Room

**8pm** Bideford Phoenix Morris & Exmoor Border at Crealock Arms, Littleham

## **Thursday 21<sup>st</sup>**

**10.30am** Walking for Health along Tarka Trail. Clarence Wharf Car Park. 421528

**7pm** Hartland Aikido Club for over 18s at Bucks Cross Village Hall.

**7.30-9pm** Samba Baia Rehearsal at Community Arts Network, 13 Rope Walk. New members welcome.

## **Friday 22<sup>nd</sup>**

**7.45pm** Modern Sequence Dancing, Kingsley Hall, W Ho! 01769 540309

**8pm** Ceilidh Club, Northam Hall. 476632

## **Saturday 23<sup>rd</sup>**

**9am-2pm** Bideford Farmers' Market on the Quay.

**10am-4pm** Craft Fair at Lavington Church.

**11am-6pm** Lundy Art Group Exhibition at Blue Lights Hall, Appledore

## **Sunday 24<sup>th</sup>**

**10am-6pm** Lundy Art Group Exhibition at Blue Lights Hall, Appledore

## **Monday 25<sup>th</sup> – Bank Holiday**

**10am-5pm** Lundy Art Group Exhibition at Blue Lights Hall, Appledore.

**1.30pm** Open Day at Victoria Park Bowling Club.

## **Tuesday 26<sup>th</sup>**

**10am-1pm** Lavington Church coffee and lunches

**10.30am** Walking for Health. 421528

**2-3.30pm** Salvation Army 'Fun &

**6.30pm** Bideford Band Beginner's Group at Band Room. 475653

**7.30pm** Lions Club meet at Royal Hotel

**8pm** Torridge Male Voice Choir meets at Woolserly Village Hall. 470913

Palladium Club *Jam Night*

## **Wednesday 27<sup>th</sup>**

**9.30am-2.30pm** Free Social Club for ages 19+ at Happy Café, W Ho!

**10am-12pm** Bideford Healing Group at Sea Cadets Bldg in Victoria Park.

**10.30am** Walking for Health in Victoria Park. Meet at Cafe du Parc. 421528

**11am-1pm** Creative (Memory) Café at Quay Meeting Rm, 5 Danver Court, Clovelly Rd Ind Estate. 07817976053

**1-2.30pm** SHoW (See Hear on Wheels) at Tesco, East-the-Water.

**7.30pm** Two Rivers Wind Ensemble Rehearsal at Bideford Band Room

**8pm** Bideford Phoenix Morris at Royal Exchnage, Torrington

## **Thursday 28<sup>th</sup>**

**10.30am** Walking for Health along Tarka Trail. Clarence Wharf Car Park. 421528

**7pm** Hartland Aikido Club for over 18s at Bucks Cross Village Hall.

**7.30-9pm** Samba Baia Rehearsal at Community Arts Network, 13 Rope Walk. New members welcome.

## **Friday 29<sup>th</sup>**

**10am-1pm** Lundy Art Group at St Mary's Church Hall, Appledore. 472158

**7.45pm** Modern Sequence Dancing, Kingsley Hall, W Ho! 01769 540309

**8pm** Ceilidh Club, Northam Hall. 476632

## **Saturday 30<sup>th</sup>**

**9am-2pm** Bideford Farmers' Market on the Quay.

**12-4pm** Appledore Village Green Fair at Back Field.

## **Sunday 31<sup>st</sup>**

**11am** Coast & Country Walkers. Barnstaple 8 miles. 421883

*Also*

## **Saturday May 2nd 2015 ; Northam May Fair.**

After its highly popular revival in 2012 the Northam May Fair is now an annual event! As before this will take place in the Community Centre, St Margaret's Church and outside in the gardens.

Alongside the crowning of the May King and Queen. attractions will include vintage cars and bikes, bouncy castle, music and food, not to mention a medieval re-enactment display and rides on a miniature traction engine - plus much more!

This is very much a community event and spaces will be available for individuals, groups and charities

to raise their own funds.

## **Big Lunch – advance notice**

Ginette Berry and Terry Thorpe, joint organisers of the award winning Westward Ho! Big Lunch said: "our next "Big in the Ho!" Big Lunch is on Sunday 7<sup>th</sup> June at the Kingsley Hall. "

Residents can apply for tickets to "Big in the Ho!" from Saturday 2<sup>nd</sup> May in Arnolds Pharmacy, by emailing [bigintheho@yahoo.com](mailto:bigintheho@yahoo.com) or by ringing 01237 421274 giving their contact details, number of tickets required and ages of those attending. The deadline for receipt of applications is close of business on Friday 29<sup>th</sup> May. Demand for tickets for this year's event are expected to be high therefore any tickets not collected from Arnolds by Thursday 4<sup>th</sup> June will be re-allocated to those on the waiting list.

## **The Littleham Film & Social Club**

is a highly successful small enterprise which shows current film releases on the first Saturday of every month at Littleham Village Hall.

Those who wish to become full members pay £12 for an annual membership which entitles them to watch eleven films throughout the year. We can only offer these amazingly cheap prices because we have a new "umbrella" copyright licence which is much cheaper than the £100 monthly licence we used before. We want to pass on these savings to our audience, making new films accessible for everyone. The only disadvantage is that we can publicise the coming films only to members - not to the general public. This means that we can tell you when a film will be shown but we can't tell you the title of the film!!!. Instead, we'll give you a website address and a phone number so you can find out what we're showing. I'm sorry it's rather complicated but these are the copyright rules. The benefits far outweigh the disadvantages as you will be able to see current films at a fraction of the usual price, in a small, friendly environment, with easy parking and a big welcome as soon as you walk through the door.

*Hope to see you there on Saturday 2nd May – the film starts at 7pm. Please phone 01237 471928 or look on the website [www.littleham-landcross.org.uk](http://www.littleham-landcross.org.uk) for details of the film.*