



# BIDEFORD BUZZ



A free community newsletter for Bideford, Northam, Appledore, Westward Ho!, Instow, Lundy and villages west as far as Hartland



© Peter Christie

An iconic building in Bideford, Nat West Bank (formerly National Provincial) closed on the 29th May 2018. On Page 3 Peter Christie looks back on its history and Gerald Waldron remembers his time as a bank employee.

*This photo shows the bank in around 1870.*

*If you have any memories of the bank, either as a customer or employee, and would like to share them, please send to editor at address below.*

## BUZZ AGM

On 12th July Bideford Buzz will be holding its 17th AGM at the Pannier Pantry at the Custom House at 7pm. All welcome, with refreshments available, but please let us know if you will be attending.

## What's Inside This Month's Buzz?

- ◆ Endymion Beer on British Naturalists' Association
- ◆ Bookstart Week at your local library
- ◆ Yazzy and Glastonbury
- ◆ Plus our regular items ...

## CONTACT BUZZ

Bideford Buzz is produced by a team of volunteers with practical assistance from Torridge District Council, Torridge Voluntary Services, Bideford Town Council, Bideford Bridge Trust, Northam Town Council, Devon County Council & Bideford Freemasons. If you are interested in helping to produce or distribute this newsletter we would be pleased to hear from you. Please note that for advertisements there is a charge from £25 per box per month. Cheques payable to Bideford Buzz Newsletter Group. All items for inclusion should be sent by the 11th of the month to the Editor, Rose Arno. Further information about us can be obtained from the Buzz on 01237 476549. 3,500 copies are printed monthly.

**All items for inclusion, advertising and distribution to be addressed to Rose Arno (Editor) c/o Torridge Voluntary Services, 14 Bridgeland Street, EX39 2QE.**

Email: [editor@bidefordbuzz.org.uk](mailto:editor@bidefordbuzz.org.uk). Mobile: 07929 976120. Web: [www.bidefordbuzz.org.uk](http://www.bidefordbuzz.org.uk).

## TRUST IN JOURNALISM IMPRESS

The Buzz is regulated by IMPRESS: the independent monitor for the press.

For complaints scheme see: [www.bidefordbuzz.org.uk](http://www.bidefordbuzz.org.uk)



Bideford Town Council

# Buzz Bits.

## Christian Aid

Christian Aid has organised a sponsored walk at Arlington Court EX31 4LP on **Saturday June 23<sup>rd</sup>** from 10:30am – 3:30pm. This family event allows each entrant to complete as many laps of 1.8 miles as they wish. Register now at [www.christianaid.org.uk/events/walkingstone@christian-aid.org](http://www.christianaid.org.uk/events/walkingstone@christian-aid.org)  
Mobile-07814 131167

## Encore! bring the West End to Westward Ho!

The theatrical singing group, **ENCORE!** will be performing at Holy Trinity Church, Westward Ho! on **Saturday 30<sup>th</sup> June at 7.30pm**, giving you the chance to sample a taste of the West End without leaving the village. Includes all your favourite songs from the shows. Entry is free, with a retiring collection. Light refreshments in the Church Hall after the concert.

## Open Garden and river walk.

**Sunday 10th June From 2-6pm at Hole farm, Woolsery.**

Adults £4, children free. In aid of NGS cancer charities.

Tea and homemade cakes in the barn All welcome including dogs on leads.

Signposted from A39 at Bucks cross. More info 01409 241547.

## Open Gardens next month.

**Friday 6th July**

**12.00 – 4.00 at 4 Blyth Court Westward Ho! EX39 1XF.**

Pimms and strawberries.

**Tuesday 17th July, 2-5pm at Hallsannery.**

Coffee/ tea/ scones/ cakes.

Tickets £5, available from North Devon Hospice shop, or by calling 01271 347232. (free entry children under 5.)

## Water Festival and the Cardboard Boat Regatta

The variety on the river will be amazing: Instow Yacht Club, Cardboard Boats, Gig Boats from Appledore, the Lifeboat, Instow Ferry and many others providing safety boats during the Cardboard Boat races.

The important factor in June is to start the building of Cardboard Boats because there are just 7 weeks 'til the Festival. All the details are on the website: [waterfest.bidefordrotary.com](http://waterfest.bidefordrotary.com) with suggestions of how to build a boat and information about sponsorship and the availability of cardboard from our sponsors at Atlas Packaging. Any queries, please, email: [mandjboth@gmail.com](mailto:mandjboth@gmail.com)

## 40th Anniversary Jazz Cruise on the MS Oldenburg

**Friday 15th June 2018**

Northam Lodge are celebrating their 40 year anniversary by hosting a fundraiser on the MS Oldenburg on Friday 15th June 2018 from 6.30pm. We will leave Bideford Quay for a two hour sailing around the Taw Torridge estuary.

The wonderful Alan Lewis All Stars Jazz Band have been booked to entertain you, and you are welcome to bring a picnic to enjoy alongside a fully licensed bar.

Tickets cost £16 (adult)/£8 (child) and can be purchased directly from our website at

[www.northamlodge.co.uk](http://www.northamlodge.co.uk). **REMINDER – For those still wishing to purchase tickets, you are not too late!**

**Soul Intention** play the North Devon Freedom Festival at Petroc College Friday June 22<sup>nd</sup> 6 – 7pm All enquiries to the Liberty Centre Café, Petroc or email: [freedomfestival@petroc.ac.uk](mailto:freedomfestival@petroc.ac.uk)

## Flower Festival Friends of the Church of St Mary Magdalene Huntshaw

Reflections on War and Peace. Commemorating 100 years since the end of the First World War, Saturday & Sunday, 2nd & 3rd June, 12 – 4 pm Church of St Mary Magdalene, Huntshaw Poetry, music, peace doves, children's activities, cream teas. The festival will be a place for reflection, taking us from the horror of war to the hope of peace as we remember those who died in conflicts over the years and those still today affected by war. More details Audrey 07952028013 [audreyalimo@yahoo.co.uk](mailto:audreyalimo@yahoo.co.uk) or Lorraine 0791 250399 [lorrainehooper489@btinternet.com](mailto:lorrainehooper489@btinternet.com)



## End of an era

The closure of Bideford's Natwest bank seems a suitable time to look at its history. The story begins around 1790 when four men established a bank in town. They were James Ley a prominent merchant, Stephen Willcock a wine merchant, John Glubb a lawyer, and Charles Cutcliffe a Barnstaple banker. Their new venture seems to have been set up in Ley's house on the N.E. corner of High Street. A map from 1842 (top right ) shows the building split into two whilst the photograph (front page) clearly shows which section was being used as the bank. The fact that the business became known as 'Bideford Old Bank' suggests it was the first such establishment in the town.



In 1843 under its 'official' name of J.Ley & Co it was taken over by the National Provincial Bank which had been founded in London a decade earlier. At some time the building next door was incorporated into the bank as shown on this 1888 map (right). Under its new name it continued to provide banking services to Bideford, and in 1930 plans were submitted to modernise the building. These saw a new doorway at the eastern end with the old entrance being closed up along with a reinforced strong room. The work was carried out by John Cock, a Bideford builder and one-time Mayor of the town.



Since then various changes have been put in place to meet modern requirements (e.g. an ATM and bullet proof glass screens). Sadly the gradual movement to on-line banking has seen the Natwest directors decide to close this branch – Bideford will be the poorer.

**Peter Christie.**

## Reminiscences of an old-fashioned banker at National Provincial Bank in North Devon in the 1950s.

I applied to join the National Provincial Bank in 1950 and had to go to London for interview with the Chairman & General Manager. It so happened that his wife had presented prizes at Bideford Grammar School's Prize-Giving not long before, and I was one of the recipients, so I was offered a job without a formal interview. My first appointment was at Torrington for 6 months, I then did my National Service and returned to the Torrington branch for a further 6 months before being transferred to Bideford.

My first taste of banking was at Torrington where the Manager opened the post which arrived at 8 o'clock. He unlocked the door for staff at 9 o'clock before having breakfast upstairs in his flat and then going fishing during the season. He returned later in the afternoon to lock up then spent the evenings doing business with customers in the local pubs.

From what I remember there were 20/30 members of staff at Bideford but they had to cover the branch office at Northam, a daily agency at Appledore, and a monthly morning visit to Clovelly. One member of staff plus a guard went by taxi to Clovelly, but no business was carried out there apart from selling postcards of the premises at 6d a time. Two members of staff ran the Northam branch but were not allowed to leave the bank so coffee and doughnuts were delivered by Patts, who ran a café across the road.

Male members of staff had to wear suits, collars and ties at all times. All entries were entered manually in ledgers. The bank was open from 10 am to 3 pm but staff had to remain until they balanced the books – sometimes quite late in the evening. Once £500 couldn't be accounted for and, after searching everywhere, staff had to give up. However, 6 months later a junior was cleaning dust from under the safe and found the missing bundle of notes. Any dirty notes at the bank had to be taken out of circulation, parcelled up with the bank seal and returned to the Bank of England. Two members of staff carried the packages up High Street to the Post Office!

At the beginning of 1955 I was transferred to London at a week's notice. Shortly after I arrived at the Bank's hostel two others were transferred from Bideford. I myself was contacted within the first week at my new branch about playing rugby for the Bank. I was told I was posted to London because I played rugby and I thought it was because of my mental ability! How times have changed since those days with Northam and Torrington closed, and now Bideford.

**Gerald Waldron.**

# Book Buzz



**The Uncommon Reader** by Alan Bennett;  
*discussed by Bideford Library Readers' Group. (The Readers' Group meets on the first Wednesday of every month, 2pm at Bideford Library.)*

We commoners know that our constitutional monarch gets exercise from riding horses and chasing corgis. What we may not have considered is the Queen's enjoyment of literature. This well written novella, enjoyed by the majority of the Reading Club, is a frothy conceit in which the reigning monarch suddenly discovers in her 70s the joy of reading-and not *any* reading but a playlist of Bennett's favourite books. Bennett does not allow her Majesty to set foot outside manorial settings with the exception of the Westminster mobile library parked outside the Royal Kitchens. In real life the excellent Buckingham Palace Rd Library, which was regularly used by the Queen Mother's lackey, is only two streets away. *[Incidentally (**editor's note** here) - as a librarian in the sixties working for Westminster Libraries I knew the back story to the Queen Mother's library habits and the fact that she liked to read crime fiction, particularly Dick Francis.]*

Bennett needs a hero and invents a scenario in which Her Majesty stumbles across a mobile library while chasing her dogs, meets her guide, Norman, and proceeds on a literary journey in a cleverly written, gently humorous and mildly republican narrative. He becomes her amanuensis much to the chagrin of the Royal Courtiers who in time surreptitiously park him in the Creative Writing programme of the University of East Anglia

Royal duties become onerous to her Majesty as the journey through literature proceeds. When a case of reading materials goes missing on an official trip to Canada, the queen suffers from 'separation anxiety' and courtiers suspect the onset of dementia.

The Royal Household have been at the forefront of embracing modern technology through ebooks and audio books. We know from documentaries that Her Majesty is committed to preserving the royal historical materials within her royal libraries. We all expressed delight in Her Majesty's progression to the role of author, through one suspects over her reign that she has had a great deal of practice.

**Linda Napier-Burrows**

## What's happening at your local library?

It's **National Bookstart Week** from 4th to 10th June. Aimed at encouraging a love of books in children under 5, all Devon libraries will have a limited number of free books to give away. This year's book is 'A Busy Day For Birds' by Lucy Cousins (Famous for 'Maisy Mouse'). There will also be some colouring in and crafts to go with the theme.

**Appledore Library** are teaming up with the Poppins Parent and Toddler Group on Monday 4th June from 10-11am and will have a special storytime, music and crafts session at the library, then it's back to St Mary's Hall for snacks and playtime 11am-12pm.

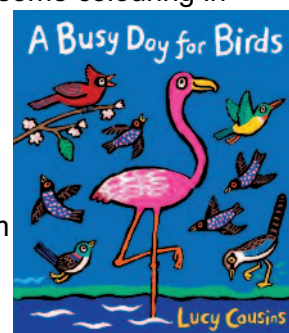
**Northam Library** will have their Bounce and Rhyme session Monday 4th June from 9:15-9:45am.

**Bideford Library** have their regular story time on Thursday 7th June from 9:30-10am. For more info on National Bookstart Week go to [www.booktrust.org.uk](http://www.booktrust.org.uk) also...

### Bookstart Corner

Bideford Library have teamed up with Bideford Bay Children's Centre to offer a fun free course for parents with children under 5 years old. The course starts on Friday 8th June from 10-11am and runs for 4 weeks in total at Bideford Library. Each week parents will get free items from the Bookstart Corner Pack to support their child in developing a love of stories, rhymes, puppets and drawing. Places are limited and booking is essential through the library or Children's Centre.

**[devonlibraries.org.uk](http://devonlibraries.org.uk) or Bideford Library 01237 476075.**



## Where did all the Signposts Go?

A local information booklet written for carers of people with dementia. Caring for someone diagnosed with dementia can often be a lonely and bewildering experience. The hope is that this booklet may provide some direction for carers by offering input from those who have experienced the journey first hand and by the inclusion of a few signposts for the road ahead. **Booklets are available from Bideford and Northam libraries.**





**Time2Care**


We are a local family owned Domiciliary / Homecare business providing supportive care within your home to help maintain your independence.

**We believe your best care is in our hands**

Personal Care - assisting with bathing/showering and dressing

- Respite Care/night sitting
- Life limiting/ palliative care
- After hospital care
- Assistance with medication
- Enabling and companionship
- Meal preparation
- Domestic care: housekeeping/laundry

Our care includes day, evening, night and weekends 7 days a week

## Help at Home

We offer older people practical and support services that can be tailored to suit individual needs.

**Our Practical Help Includes:**

Cleaning, laundry, changing bed linen, light meal preparation, shopping and help with correspondence.

**Our Support Service Provides:**

Respite for carers by offering companionship for the people they care for. This can be at home or on accompanied outings.

**All staff are fully trained and DBS checked.**

Available in Bideford and the surrounding areas.

**Call 01805 938537 for details**

**TTVS** Registered Charity No 1125142. Company limited by guarantee  
Registered in England 6577677



**Snapdragons Pre-School is now accepting children from 2 years of age in September 2018**


Be sure to book your child's place in our "home from home" setting, where every child and every parent is known and respected as individuals and let us prepare your child for the smooth transition into primary education.

We offer an average ratio of 1:5 Staff/Child with the benefits of our pre-school environment.

We accept 15/30 hours funding for 3-4 years of age. We also accept 2 year old funding if eligible.

For more details please contact us:

**www.snapdragonsnortham.co.uk**  
**07939 850751**

**SOL**  
Sharing One Language  
CHARITY NO: 1019185

## HOST FAMILIES NEEDED IN BIDEFORD

**NEED SOME EXTRA CASH ?**

Would you welcome a young student (or two) in your home?

Would you like to feel you were doing something worthwhile?

**We are looking for caring host families**


Our students stay for 7-10 days and are given a full programme from Monday to Saturday, with Sunday to enjoy with their host families.  
Dates from June July Aug & Sept.

Give it a go you may love it !!

Special SOL discount for you at local attractions

Please contact me for further detail

**Contact : Karen Richardson**  
**karen@sol.org.uk**  
**01271 327319**  
**www.sol.org.uk**





## British Naturalists' Association

The British Naturalists' Association's (Taw Valley and Exmoor Branch) recent field trip was to Parkham Ash, to meet Peter Channing on his private 34 acre farm. We arrived shortly after 5.30am, to listen to the 'Dawn Chorus,' and to explore Peter's high level stewardship culm grassland. The farm is made up of a variety of habitats including ancient woodland, marshy areas, ponds, scrub and culm grassland which has been very carefully maintained. Areas of scrub are being cleared to provide corridors for rare Marsh Fritillary butterflies to spread. Marsh Fritillaries are weak flyers and will not fly over tree canopies, so this is vital work, which is helping to preserve and extend the species population. The butterflies will lay their eggs on the leaves of *devil's bit scabious* before it actually flowers.

The culm grassland is grazed by 3 Exmoor ponies – Ted, Bruce and Croan. Croan has been brought up from Cornwall, and the ponies do an excellent job maintaining the grassland and encouraging the growth of flora. Although it was a little early in the year (April) for many wildflowers, we saw a wide variety including primroses, wood violets, marsh violets, crowfoot, marsh marigolds, selfheal, lady's smock, (see photo) lousewort and early purple orchids - to name but a few! 50 dormouse boxes were already in place and a marsh tit was happily sitting on 4 pinkish eggs when we arrived – she will lay more. Already there were 20 nests in the boxes – 2 with eggs. Peter explained that the small birds often use the nest boxes first, taken over hopefully later on in the year by dormice.

A good sign of dormice activity, without disturbing them in their nests, are open hazel nut shells. The ones split perfectly in half indicate squirrels, but the ones with a wide hole in the side of the nut, showing a smooth edge but with gnaw marks *inside* the lip of the hole, have been made by a dormouse. Gnaw marks all the way around the lip of the hole, have been made by wood mouse or another small animal. We also found red deer slots (hoof prints) and Peter confirmed he has 10-15 roe deer resident, and about 6 red deer. Red deer mainly during the winter months.

The purple moor grass is deciduous and is burnt off each year. Much of the grassland bears hummocky grassy mounds which are the perfect habitat for nesting harvest mice. We found toads but no slowworms under the corrugated iron sheets this time.

We chatted and explored for 4 amazing hours with Peter as a heron flew overhead (The BNA's emblem) and observed a host of bird species including greater spotted woodpeckers, nuthatch, treecreepers, willow warblers, chaff chaffs, marsh tits, chaffinches, blue tits, robin, wren and many more – over 40 species were listed. We then left Peter and his beautiful haven so explore Peppercombe Beach for wildlife, not far from Horns Cross. Difficult to end such a perfect day..... but yes, we ended up in the pub! If you would like to join the BNA please visit [www.bna-naturalists.org](http://www.bna-naturalists.org) or contact Branch Chairman Brian Sims 01271 3436

**Endymion Beer BNA Youth Officer**



## The Bideford Branch of THE RELIGIOUS SOCIETY OF FRIENDS or QUAKERS

hold their Meetings for Worship on Sunday  
mornings, between 10.30 and 11.30 am,  
followed by refreshments and a chat,  
at 17 Honestone Street, Bideford  
(opposite the car park)  
Everyone is welcome  
For further details, contact:  
Rob Sharrock: Telephone: 01237 239753  
Email: rob.sharrock@gmail.com

## klivekraft Boating Bits Chandlery

Boat Oars, Paddles,  
Outboard Brackets etc.

*Clive Curtiss-Wall*

01237-432960 klivekraft@gmail.com

## FREE CLOTHES FOR CLIENTS



Harbour will open our doors in June (outside  
of our normal working hours) for two hours  
to allow clients to further benefit from the  
very kind donations gifted by the community.

3 items per person

At: 7 Queen Street, Bideford

## GOURMET PORKER



HOG ROAST, BBQ, AND PAELLA

GOURMETPORKER.CO.UK

TEL: 07889 277608 EMAIL: gourmet.porker@gmail.com  
FIND US ON FACEBOOK AND TWITTER

Est. 1998  
**COMPLETE**  
COMPUTING  
SW LTD

Opening hours:

9am - 6pm Mon.Wed.Fri 9am - 5pm Tues. Thu  
10am-5pm Saturday Closed - Sunday



Set-up a wireless  
network



Virus check &  
eradication



PC health  
check



PC security  
& backup



Hardware  
installation



Software  
installation

43 Old Town, Bideford, EX39 3BH **01237 478012**

## BIDEFORD CINEMA

Friday 1 and Saturday 2 June at 7.30pm at Kingsley School  
**The Guernsey Literary and Potato Peel Pie Society** (12A)

Saturday 2 at 5.00pm and Sunday 3 June at 6.00pm at  
Kingsley School: **Rampage** (12A) 107 mins

Friday 8 at 7.30pm and Saturday 9 June at 5.00pm  
at Kingsley School: **Avengers: Infinity War** (12A) 149 mins

Saturday 9 at 8.00pm and Sunday 10 June at 6.00pm  
at Kingsley School: **Guardians** (15) 86 mins

Friday 22 and Saturday 23 June at 7.30pm  
at Kingsley School: **On Chesil Beach** (15) 110 mins

For up-to-date information on times and dates please see our weekly advert in  
the North Devon Gazette, or visit our website at [www.bidefordcinema.org.uk](http://www.bidefordcinema.org.uk)



## Bideford Cobblers & Keys

77 HIGH STREET, BIDEFORD, EX39 2AA

**25%** Off a Key Cut  
or Shoe Repair  
with this  
voucher

[www.bidefordcobblers.com](http://www.bidefordcobblers.com)

Tel: 01237 472663

## BIDEFORD BUZZ

### Advertising Rates and Terms

Monthly Pricing

£25 (1/8 page) £50 (1/4 page)  
£100 (1/2 page) £180 (full page)

For more details please contact  
[editor@bidefordbuzz.org.uk](mailto:editor@bidefordbuzz.org.uk)



## **"I now have a greater understanding of this thing I call a journey of grief"**

Children often experience a range of emotional, social and physical effects after the death of someone close to them. These may include anxiety, depression, insomnia, nightmares, isolation, failure to maintain progress at school and in the worst cases, thoughts of suicide. **Families in Grief (FiG) is a registered charity, established in 2006 and based in Bideford who help bereaved children, young people and their families who are experiencing some of these things.** They do this through phone support, home visits and support groups lasting six weekly sessions. During these groups the children and young people do arts and craft activities as well as physical activities which help them come to terms with the death of their parent, relative or friend.

Brothers Bear and Riley came to one of Families in Grief Children's groups last year after their grandmother had died. Mum and Dad, Katie and Jason had asked for our support as the boys were finding this very hard to cope with. Katie and Jason attended a parent's group whilst the boys were in a room nearby with other bereaved children. After the group Jason wrote:

"I now have a greater understanding of this thing I call a journey of grief. No two people are the same, grief is personal and different for everyone. What is important is the learning that comes from understanding where this journey began and where it has taken me. I needed to understand my own grief to better support my family. FiG showed me how to deal with and share my grief and we are now better equipped thanks to FiG".

Following FiG's support, children attend school more regularly, family relationships improve, and many families tell us that they feel less alone. FiG is very fortunate to receive some funding from BBC Children in Need but still needs more help to support bereaved families in the North Devon and Torridge area.

**If you would like to be involved any aspects of fundraising for Families in Grief or if you would like to volunteer to work with bereaved children, young people and their families please contact the FiG office 01237 479027 or email [info@familiesingrief.org](mailto:info@familiesingrief.org).**

**Sue Smith**

## **Advice from your local Citizens' Advice Bureau**

Torridge, North  
Mid and West  
Devon

**citizens  
advice**

***'I am over 25 and entitled to the National Living Wage, but I suspect I am being underpaid. How can I find out if I'm being paid the right amount, and claim what I am owed from my employer?'***

If you think you've been underpaid, you should act quickly, as it's harder to get your money back three months after the problem arose.

Check your payslip to see if there's been some mistake. You will be able to see the number of hours you've worked, the rate you've been paid at and if there have been any deductions.

Ask your employer to explain anything you don't understand on your payslip, and tell them why you think you have been underpaid. If there was a genuine mistake, ask your employer to pay you straight away. You shouldn't have to wait until the next payday.

If your employer refuses to pay back your wages you can formally raise a grievance, either by writing a letter to your employer or following your company's grievance procedure. Explain that you haven't been paid enough and you want them to pay the difference.

If this still doesn't work, you can take your employer to a tribunal. Contact the Advisory, Conciliation and Arbitration Service (Acas), who will see if your employer will agree to a conciliation process, rather than go to court. Otherwise you can take your employer to a tribunal. Think carefully before starting a tribunal claim as it can be expensive and stressful.

If you need any advice or guidance through this process, contact your nearest Citizens Advice.

Pop into our Bideford Office in Bridgeland Street; open

Mon, Tues, Thurs and Fri 10am - 3pm  
or call our Adviceline on 03444 111 444  
[www.ruraldevoncab.org.uk](http://www.ruraldevoncab.org.uk)

*Copyright Citizens Advice. For the most up-to-date advice, please visit [www.citizensadvice.org.uk](http://www.citizensadvice.org.uk).*



## Fair weather can bite! Advice from Torbridge Vets.

Finally the sun is out! We are all itching to get out and about with our pets and soak up the rays. One fair weather problem comes in the form of Britain's only venomous reptile, the adder. They have already been seen by our staff out on Torrington commons and in the sand dunes at Westward Ho! They are fascinating creatures and generally will only bite if provoked. They can be found basking on sunny woodland slopes, in long grass, or in sand dunes. Bites earlier in the season tend to be worse than those later, and for smaller dogs they can be deadly. Dog often get bitten on the face or legs as they anger the snake by accidentally stepping on them or sniffing that them. Cats can be bitten too but they tend to be more street wise than dogs so it's rare! Signs your pet has been bitten include sudden cries of pain followed by localised swelling. You may see puncture marks you may not. Some dogs will show very few signs and simply become unwell later on with lethargy, vomiting etc. If you suspect your pet has been bitten:

### Do:

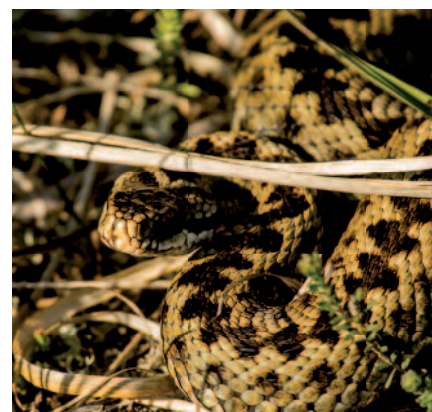
- ☐ Keep calm, keep your dog calm to reduce blood pressure
- ☐ Try to keep your dog still, carry them to the car (if possible!)
- ☐ Contact your vet to let them know you are coming

### Don't:

- ☐ Panic!
- ☐ Apply a tourniquet, this is not recommended in most cases
- ☐ Try to squeeze or suck out the venom
- ☐ Kill or catch the snake (we know it's a adder and it's not its fault, it was just acting in self defence)
- ☐ Mess with the bite site

We at **Torbridge vets** really hope you enjoy the weather with your pets. We hope some of the information comes in handy and you can enjoy the good weather whilst keeping your pets happy and healthy. Next time I shall explain about how to keep your pets safe in the heat of summer (assuming the sun stays with us!).

**Alice England**



## NEW Garden Waste Service in Torridge



Register now:  
[www.torridge.gov.uk/gardenwaste](http://www.torridge.gov.uk/gardenwaste)

Love Torridge  
Love Recycling

We are now offering an **optional** fortnightly garden waste collection service for just **£35** per year.

To subscribe visit:

[www.torridge.gov.uk/gardenwaste](http://www.torridge.gov.uk/gardenwaste)

or  
call 01237 428700  
and select option 3



## Gardening tips for June.

June is always regarded as the month for roses and it is a good time to feed them and keep any pests or diseases at bay. Good rose fertiliser, especially formulated for them, is available at most DIY stores or garden centres and is needed to keep them in top condition. Blood Fish and Bone mix, which is organic, is a good choice. Don't use fertiliser late in the summer as it makes too much young growth that won't ripen before Winter. It's also good to give a precautionary treat for aphids, greenfly, blackfly and whitefly for the most common rose pests and a systemic general garden product should be chosen. For black spot and rust however you will need ones especially for roses. Please remember to wear disposable gloves and possibly a disposable mask too. Remember to wash the sprayers you use for the chemicals. One important point on diseased leaves, whether it is black spot or rust, remove them and dispose of them safely before they fall to the ground. When the leaves hit the ground the fungal spores lodge in the soil and when it rains bounce back under the leaves above. Don't compost the leaves either.



When deadheading roses don't just remove the flowers but cut back two leaf joints just above the point where the leaf joins the stem; (what is known as the leaf axil.) Doing this ensures a more vigorous second flush of blooms.

### Bideford Gardeners' Club

Hopefully your garden is looking good right now, but if you are growing geraniums, (more correctly, zonal pelargoniums) Bideford Gardeners' Club has a talk by Ken Bishop on Tuesday 12<sup>th</sup> June on these very varied plants. As usual it's at Bideford Methodist Church Hall off Honestone Street car park. We are also running a coach trip to Bowden's Hosta nursery near Okehampton and The Garden House, Buckland Monachorum on Friday 26<sup>th</sup> July; full details on our website [www.bidefordgardenersclub.co.uk](http://www.bidefordgardenersclub.co.uk) or from myself

Just a quick note regarding the new GDPR regulations for sharing personal data. We only hold a database of club members and no other names or details are stored. We do not pass on any information to the public or other members without their express wishes.

Hope your plants are all growing well and we would love to see them at our Flower Show on 19<sup>th</sup> August at Bideford Pannier Market; again more details on the website.

**Mike Avis 07710 454230.**

## Buzz Byte



What is a cloud? In computing terms It's not a fluffy white object in the sky, but a physical server used for storing and sharing data. Your information is stored on a remote database which is serviced and controlled, provided by cloud computing companies operating from data centres, the most well-known being the Apple iCloud. Clouds allow un-networked computers to communicate and share files without using the storage on your own hard drive. Clouds are accessed via the internet. A cloud works the same as you, storing your data on an internal or external hard drive or USB stick; you can retrieve, amend and update it, but by using a cloud you are not filling your own hard drive space, allowing your PC to run more quickly.

Although cloud storage has only been promoted relatively recently it has been around for a while, in formats that you will have been using and not realise. The way these companies operate they are [provided a form of cloud storage – YouTube, Facebook, email providers and Google Docs.

Consumers are moving to cloud storage as it is convenient and flexible. One of the pros of using a cloud is that you can access your data from any device, in any location, that can access the internet. The cons to look into are the reliability and security of the company who is storing your data, and what measures they take to ensure that is protected against hackers and loss. There are lots of products available, so you need to consider what information you need to store, how much data there will be, and who needs access to it before making your purchase.

**Nickie Baglow** (Complete Computing.)





# SHIPPING NOTES



The next vessel at **Bideford** will be at the beginning of July.

## Appledore.

**LE George Bernard Shaw** still fitting out; first sea trials in July. You may have noticed there is no gun on the fore end of this vessel; this is because it will not be fitted until she get to her home base in Eire (using a gun from vessels bought by the Irish Navy from the British Government when we handed Hong Kong back to China in 1999).

## Bristol Channel Observations

### One of the largest vehicle carriers in the world.

**18.4.18** at 17.35 vehicle carrier **Don Carlo**, 28,142 tons d.w, owners Wallenius Wilhelmsen Norway and Sweden inward bound for Portbury.

**21.4.18** at 13.35 self discharging bulk carrier **Yeoman Bank**, 38,997 tons d.w, owners Aggregate Industries UK Ltd UK, inward bound for Portbury

**22.4.18** at 15.22 vehicle carrier **Grande Benin**, 26,097 tons d.w. owners Grimaldi Line of Italy, outward bound from Portbury having sailed at 1035.

**25.4.18** at 0725 vehicle carrier **Florida Highway**, 18,930 tons d.w. ,owners Shoei Kisen Kaisha Ltd Japan, inward bound for Portbury. At 20.28 cruise liner **Marco Polo**, 22,080 gross tons, owners Cruise and Maritime voyages UK, inward bound for Avonmouth.

**29.4.18** At 11.02 cargo vessel **Eemsborg**, 10,750 tons d.w., owners Wagenborg Shipping BV Netherlands, inward bound for Cardiff. At 12.30 vehicle carrier **Grande Sicilia**, 12,353 tons d.w., owners Grimaldi Line of Italy inward bound for Portbury.

**1.5.18** at 16.23 vehicle carrier **Virgo Leader**, 20,111 tons d.w., owners Nippon Yusen Kaisha Japan, inward bound for Portbury.

**4.5.18** at 17.23 vehicle carrier **Autosun**, 6,670 tons d.w. owners United European Car Carriers Norway, inward bound for Portbury.

**6.5.18** at 19.10 vehicle carrier **Grand Pioneer**, 19,120 tons d.w., owners Cido Shipping (H.K) Co Ltd Hong Kong, inward bound for Portbury.

**7.5.18** at 13.50 vehicle carrier **Grande Portogallo**, 12,594 tons d.w., owners Grimaldi Line of Italy, outward bound from Portbury having sailed at 09.12.

**8.5.18** at 15.57 vehicle carrier **Victory Leader**, 13,363 tons d.w, owners Ray Car Carriers Israel, inward bound for Portbury.

Regards

**Norman 01271 861183**

## Interesting Times

Saturday morning, eight o'clock, and the bell rings. A number of scenarios go through my head. Can't be the pickaxe from Axminster Tools intended to tackle the new vegetable border. Or the coat stand, or the coffee table? They all came last week.

On the doorstep is an apologetic looking neighbour 'sorry to disturb you but.....' Someone or some people broke into ten cars last night and yours is one of them... All the doors are wide open... We've called the police.'

I shout up the stairs to my husband who mutters as I knew he would, 'I'm finally getting rid of that car....'

Ten minues later there's a gathering of sleep disturbed weekend people on the pavement outside. The joker (or jokers) have clearly enjoyed themselves. Our car has experienced what is known in the parlance as an 'untidy search'. Strewn on the seats and on to the pavement are parking receipts, high viz jacket and packets of tissues.. We were lucky. The doors all still work and all that's exposed is my embarrassment at the green moss growing inside the car! Others, with more up-market stuff, have had sat navs broken and batteries flattened. The handbrake had been left off a few cars, and these have travelled down the hill and into other cars. A neighbour who uses his car as an extra wardrobe had several shirts on the pavement.

Someone comes down the road sporting a camera . 'It's already on social media - just going to take a picture of the scene.'

We will be the 'aggrieved' on this week's crime report.

Later a very helpful police officer arrived. As far as he could see it was a prank with no gain to the perpetrators at all. But I did get to clean the car! A result.

**RA**

## Felicity's Fish Recipes.

This month the summer fish arrives in all its delicate splendour and I thought it would be good to have some Georgian fish recipes - this is the cookery at the beginning of the nineteenth Century, just before the Victorian Era. The fish cookery was fairly basic with limited ingredients but some interesting influences (especially for the upper classes, who ate plentifully).

The shellfish season has started and the crabs and lobster are moving around so they get attracted to the pots more often, so catches are improving and the prices are at their most reasonable - hoping that there is fine summer weather this month!



The first is Buttered Crab or lobster - basically an interesting pate to spread on toast.

### **Warm Buttered Crabs (or lobster) to serve with toast**

450g(1lb) Fresh or frozen mixed crabmeat, or lobster cleaned and chopped finely.

3 tbsp red wine.

1 tbsp vinegar.

½ tsp ground or fresh grated nutmeg,

½ tsp salt. 1 tsp anchovy essence or 2 anchovy fillets

1 egg yolk.

115g (4oz) butter.

Toast or French bread

Lemon thinly sliced and parsley sprigs to garnish.

### **Method.**

Beat all the ingredients (crabmeat, red wine, vinegar, nutmeg anchovy, egg yolk and softened butter together well, or blend in a food processor.

Heat them gently in a saucepan, stirring occasionally. Pile the mixture into a suitable container (cleaned crab or scallop shells or small dish) and serve with triangles or thin strips of toast.

Garnish with thin slices of lemon and parsley sprigs.

To carry on the historical cooking theme we have started a *Cooking Get Together* session in Appledore. The first was held at Appledore Library, and the May group met in the North Devon Maritime Museum and visited their Victorian Kitchen. We hope to have a session in June, somewhere in Appledore -maybe with a fish lunch available -please contact me for more details at [brilliantfishsw@gmail.com](mailto:brilliantfishsw@gmail.com) or mob.07918 779 060

## Bideford Pannier Market

Remember the Market is now open from 9.00am till 4.00pm from Tuesday thru to Saturday

The FREE bus service from Victoria Park to and from the Pannier Market will run on Tuesdays and Saturdays. This service is available to all.

There will be another craft fair organised by Torridge Arts & Crafts on Saturday 2<sup>nd</sup> June held alongside the existing market. This was highly successful last time so please come along.

### **Looking ahead**

There will be a 2-day Moto-Jumble event June 30<sup>th</sup> & July 1<sup>st</sup> – organised by Andrew Bailey of Just Spectacles ..

**Stalls available for £25, small stalls for £15 and bike 4 sale pitches (sell your barn find!) for £10.... parts, leathers, jackets, t shirts, boots, exhausts etc etc! Look him up on Facebook and message him for details and to book a pitch!**



### **Butchers' Row / Market Place & Grenville Street**

Shops are open Monday 'til Saturday and offer a wide variety of goods and services, all operated by local traders. In Butchers' Row there is one empty unit at the time of writing.

Fancy a shop or a market stall? - then talk to Richard Coombes the Deputy Town Clerk on 01237 428817 – Come up and join our community

**Trev ( Minxy's Sweets)**





## WHAAM !

When people think of Devon they think of the sea, of beaches, picturesque villages and the countryside. However so much of what makes Devon special is the people who live here.



I recently attended the Westward Ho! and Appledore music showcase (WHAAM) at the Pier House in Westward Ho!, which demonstrates youth talent in our area. The event was in aid of the RNLI, a charity rooted deep in our local identity, and was attended by their representatives.

The event was opened by **Dance Fit Belly Dance Divas**, a diverse group who brought an energy to the room. Opening an evening is never an easy task, but they managed it with every hip shake and bass drop; it was clear to everyone how much they enjoyed their performance.

**Westward Ho! Youth Theatre** members performed a selection of songs from musical theatre. Connor exhibited his strong vocal range with songs from *Les Misérables* and *Beauty and the Beast*, mixing emotive vocals with a refined musical performance, whilst Rob wowed the audience with showmanship with his numbers from *Phantom of the Opera* and *Johnny English*, in a charismatic performance that held the attention of everyone in the room.

**Jess Martyn** covered some well known artists ranging from **Beyonce** to **Sia** to **Birdy**, mixing the popular songs with her own "busk" style and soulful voice that was very refreshing without losing the magic of the originals. A great performance.

**Kingsley School Choir** sang a medley of tunes from *Les Misérables*, their close harmonies and intonation a testament to their title of "Best Devon Schools choir".

**Ella Crossland**. A strong voice and lyrical talent. She performed a mix of covers and original music. Her songs were well thought out, meaningful and held a complexity that cannot be said for all professionally written music. A true songbird.

**Yazzy** bravely covered **Dolly Parton**, not an easy feat, and announced that she will be opening for Paloma Faith at a festival, a true testament to local talent. (see below)

The night ended on a high with the **5:15**; a high energy, tap your feet act, the kind that makes you nostalgic. They covered rock and alternate classics with an energetic enthusiasm and their own unique twist, collaborating with Yazzy for one of the final songs of the evening.

The support shown by each artist was amazing and their contributions were greatly appreciated by all. Thank you to all involved in this event, performers and those who made it possible.

**Lucy Braund**

## More about Yazzy

The best thing about the WHAAM is that it is not only a great festival in itself, but it has gotten so many of our local acts noticed and thrust into the national spot light. You might remember a few years ago when we first mentioned Yazzy, the melodious breeze who has since turned into quite a force of nature- uprooting trees and ripping up the rule book with soulful wail. We thought it was time to check in with how Bideford's new rising star was doing.

As Lucy already mentioned, she will be supporting **Paloma Faith** at the Glastonbury extravaganza on August 4th. The WHAAM was a fantastic culmination of all our local talent, and while the cavernous hall can seem daunting, it is still relatively personal: given a long enough set- or suitably twitchy eyes- you could scour the audience and make meaningful eye contact with every spectator. Making eye contact with the 10,000 strong rabble at Glastonbury would probably dislodge a retina. So she will have to adapt her performance style to compensate. It's time for Yazzy to evolve once again. The breeze may have swirled into a hurricane, but now it's time to turn up the power, and see how much wind 10,000 fans can generate. Sure, some of them may be Paloma fans, but let's see how many she can convert.

Standard tickets have sold out, but there are still seats for the all-inclusive supper option, meaning you don't have to wave your arms and clap your hands on an empty stomach.

**Millie Sutherland O'Gara** (former *Buzz* youth correspondent who attended the WHAAM concert last year.)



## 100 Years Ago - June 1918

There is a surplus of British-made butter available. The weekly ration has been increased from 4 to 5 oz per person.

Northam Urban District Council seek tenders for the clearing of rabbits on lands at Melbury Reservoir Parkham. One extra provision has been stipulated, "That no rabbits be poached on the Council's lands".

At the same meeting the council report that 95 allotments are now occupied in the area, compared to 29 before the war.

A handsome chair made from Bideford Long Bridge oak was presented to the Bridge Trust and accepted and acknowledged by George Willy Vincent and Alexander Greig Duncan. Restoration of the Bridge commenced in 1915 and from time to time old oak beams come to light. *(It is very uncomfortable, still in use today, and keeps meetings short!!)*

A little lad aged 11 years was run over by one of the Canadian Motor Transport cars and lost 2 toes. The previous day one of the same cars drove into a bullock.

**Property and Land for Sale.** Tomouth Estates East Appledore 12½ acres and 3 cottages.

To Let: Small farm Kas Venton, Westward Ho! 23 acres & dwelling house and farm buildings. Also 6 acre field known as 'Football Field' adjoining the main road from Westward Ho! to Bideford.

"It was stated in the Devon County Council meeting on June 20<sup>th</sup> that the Hartland to Bideford road had absorbed £28,263, so that the steam roller must have rolled in over 28,000 golden sovereigns on that previous piece of highway." *(The current comparison in £1.1 million).*

***These and many more items of local interest are available to read at the Bideford & District Community Archive at the Council Offices, Windmill Lane, Northam. Tel: 01237 471714. Open Monday, Tuesday and Wednesday mornings or visit our website [www.bidefordarchive.org.uk](http://www.bidefordarchive.org.uk).***

## Devonshire Association, Bideford Branch

On Friday 13 July, Dr Todd Gray from Exeter University will lead a 'Church Crawl' visiting three Historic Grade I Listed Buildings at Alwington, Atherington and High Bickington.

Cost £10 members, £15 non-members. This will be an all-day trip. You will need your own transport. For further details, contact Mike Wright on [bideforddabranh@btinternet.com](mailto:bideforddabranh@btinternet.com) and to whom you should send your cheque no later than 28<sup>th</sup> June.

## News from the Burton Art Gallery and Museum

The Royal Society of Painter-Printmakers come to the Burton on **23<sup>rd</sup> June**, and as well as many works in black and white, you will be inspired and delighted by the brilliant colours and fine lines of their original prints. This is their Annual Show, featuring new works by leading printmakers, using both established and experimental techniques. Once again, we will be treated to the skill of wood-engravings, etchings, linocuts, drypoint, lithographs and many more methods of producing works of art. Some names are familiar to us already, such as Hilary Paynter, Trevor Price, Merlyn Chesterman, Julia Manning and Anita Klein, as their work is often on show in the Burton Craft Gallery. Their subjects range from landscape to people, nature and city-scape, flora and fauna - a treat for the eyes. The Gallery is open every day: Mon-Sat: 10-4; Sun: 11-4. Admission Free. Craft Gallery, Shop, Museum, Cafe du Parc. So much to enjoy.

**Diana Warmington,**  
Friends of the Burton Art Gallery & Museum.



# June Diary: We're here every week

## **Mondays**

**10-12pm** Appledore Community Art Group at Appledore Community Hall

**6.45pm - 8.30pm.** Breakaway Social Club for adults with learning/physical disabilities at the Baptist Church Hall Westward Ho! 01237 475051

**7pm** Appledore Band – training band followed by senior band at **7.45 pm** Appledore Quay .St Mary's Church Hall if wet. Contact Hugh Secretary 473723

**7pm** Tai Chi at Bideford Methodist Church 01237 472532

**7pm - 8pm** Walking Football at Kingsley School.Men and Women. Tel 07895035091

**7pm - 9pm** Table Tennis Club at Bideford Youth Centre

**7.15pm** Appledore Singers rehearse at Appledore Baptist Church. 420652

**7.45pm** Bideford Band Senior Practice at Band Room Victoria Park. Tel Becky 01237 475653

## **Tuesdays**

**10 -1pm** Lavington Church coffee and lunches

**10.30 am** Walking for Health 421528

**11.45-12.45 pm** Tai chi. Northam Community Centre. *Ageing Well* 01409 622666

**2-3.30pm** Salvation Army 'Fun and Fellowship' Club meets at Baptist Hall, Bideford.

**2.30pm** 'Lift off for ladies.' Westward Ho! Baptist Church 01237 425471

**6.30pm** Bideford Band Beginners' Practice Victoria Park Band Room 01237 475653

**7- 8pm** Walking Football at Kingsley School Women only. tel Rose Young French 07895 035091

**7.30pm** Bideford Camera Club meet at Chubb/Churchill Hall.01237 421391

**7.30 - 9pm** Samba Baia rehearsal at Community Arts Network, 13 Rope Walk

## **Wednesdays**

**10-12pm** Bideford Healing Group at Sea Cadets' Bldg, Victoria Park

**10-11.30am** Bradworthy History Society. Memorial Hall, Collacott Room. 01409 241202

**10 -1pm** Work Hub at Bideford Library. 01237 476075

**10.30-12pm** 'Feel Better with a Book' at Bideford Library 01237 476075

**10.30am-11.30am and 11.30am-12.30pm** Tai Chi SW. Free for over 50s. G4 Gym, Dadden Court Ind Est. 01237 478802

**10.30am** Walking for Health in Victoria Park. Meet at Cafe du Parc. 421528

**2pm** Tea with friends at St Mary's Church,Bideford

**2.15pm-3.30pm** "Fit as a fiddle.' Buckland Brewer School Room. Tel 01805 622666

**7-9pm** Sew Sociable at Lavington Church Rooms, Willett St.

**7.30pm** Bideford Folk Dance Club at Northam Hall 01237 473554

**7.30pm** Two Rivers Wind Ensemble rehearsal at Bideford Band Room.

**7.45pm** Torridge Male Voice Choir meets at Woolsey Village Hall. 441601

**8pm** Appledore Band Senior rehearsals at St Mary's Church Hall Appledore.Sec. 01237 473723

## **Thursdays**

**9.30am -10am** Under fives story time at Bideford Library 01237 476075

**10-11am** Tai Chi Beginners. Marlborough Court, Bideford. £2.50 donation. *Ageing Well*. 01805 622666.

**10.15am – 12noon** Northam and District Men's Forum, Methodist Church Hall, Cross St. Mike 01237 459324

**10.30am** Walking for Health along Tarka Trail. Clarence Wharf car park. 421528

**2-3pm** Seated exercise for over 60s at Westward Ho! Baptist Hall 01805 622666

**2-4pm** Tea and IT at Bideford Library. Bring your tablet/phone etc. 01237 476075

**6.45pm** Westward Ho! Bridge Club at Trinity Church Hall.01237 470990

**7.30pm** Scottish Country Dancing at Westleigh Village Hall. 473801?

**8pm** Bideford Folk Club at Joiners' Arms

## **Fridays**

**9.30am** Over sixties fitness class at Polly field [Centre.stevehammond@boatshead.com](mailto:Centre.stevehammond@boatshead.com)

**2-4pm** Sew Together at Westward Ho! Baptist Church. 01805 622666 *Ageing Well*

**2.30- 4.30pm** Torridge Table Tennis Club and afternoon table tennis club.01237 477932 at Bideford Youth Centre

**4-6pm** Needlecrafts at Bideford Library 01237 476075

**7.45pm** Modern Sequence Dancing, Kingsley Hall, W Ho! 01769 540309

**8pm** Ceilidh Club at Northam Hall 01237 4776632

## **Saturdays**

**10am -12noon** Children's lego Club at Bideford Library.01237 476075

**10am -12pm** Table tennis club at Bideford Youth Centre. 01237 477932

**10.30am -12.30pm** Scrabble Club at Bideford Library 01237 476075

## **Sundays**

**7.45pm** ND Cancer Care Trust Quiz at Robins' Nest Football Club. Tel Neil 01237 473798. (From 13th May.)

**Diary Continues on next page**

# And we're not.

## June Diary

### Continued

#### Friday 1<sup>st</sup>

**2-4pm** Sew Together at Baptist Church Westward Ho! 01805 622666 Ageing Well

#### Saturday 2<sup>nd</sup>

**10am – 12noon** Coffee morning for Bideford Band in Band Room Victoria Park tel 01237 475653

**10 – 3pm** Moreton Court Summer Fair EX39 3FP

#### Sunday 3<sup>rd</sup>

**12 -5pm** Bideford Ladies AFC Family Fun day in Victoria Park with Bouncy Castle etc.

#### Monday 4<sup>th</sup>

**6.30pm -7.30pm** Laughter Yoga at Bideford Library 01237 476075

#### Tuesday 5<sup>th</sup>

**7.45pm** Bideford Phoenix Morris Appledore Walking Tour with Angie Twitch. 01237 473798

**2pm** Bideford WI at Sea Cadet's Building, Victoria Park.

**7.30pm** Bideford Sustainability Group meets at Blacksmith's Arms, East the Water tel 01237 475375

#### Wednesday 6<sup>th</sup>

**10.30am** Parkinson's UK Torridge Branch coffee morning at Common Room 1, Ethelwynne Brown Close 01237 478128

**10-30am** Westward Ho! Crafters and Artisans Market. Baptist Church Hall Westward Ho!

**11am -1pm** Creative Memory Cafe at Quay meeting room, 5 Danver Court Clovelly Rd Industrial Estate 0781 7976053.

**1.30pm – 3.30pm** Knit and Natter group at Holy Trinity Hall, Westward Ho! 01237 475420

**7pm** Northam WI meets at Methodist Hall Cross St tel 01237 421776

#### Thursday 7<sup>th</sup>

**10-4pm** See Hear on Wheels at Bideford Pill. Tel 01271 373236

#### Friday 8<sup>th</sup>

**10am – 12 noon** Coffee 'n chat Kingsley Hall, Westward Ho! tel 01237 421274

**7.30pm** Bideford Machine Knitting Club at Chubb Community Centre East the Water tel 01237 477532

**7.30pm** Abbotsham WI meet at Abbotsham Village Hall.

#### Saturday 9<sup>th</sup>

**9.30am-5pm** Bideford Town Band Solo and Quartet Contest, Kingsley School Theatre. All welcome to come and watch players from all over the south west Contact 01237 475653

**10-12** Northam Library. Plant sale and coffee morning.

**10am** Torridge Ramblers Day Walk tel 01237 470004

**2-4pm** Creative Writing Group at Bideford Library. Tel 01237 476075

**6pm** onwards. Clovelly Lecture and dinner. Clovelly Visitors' Centre. To book 01237 431200

#### Tuesday 12<sup>th</sup>

Start of Charles Kingsley Bi -Centenary celebrations at Visitors Centre Clovelly. 07530 829653. ( Until 16th June.)

**10am – 12pm** Macular Society Support Group at Burton Art Gallery tel 01237 441466

**2pm** Arts Society North Devon at Durrant House Hotel.

**7-9pm** Torridge Tuesdays Women's Club, Ethelwynne Brown Close 1, Bideford. 07977 184897

**7.30pm** Appledore Men's Group meets upstairs at Appledore Library.

**7.30pm** Bideford Gardeners' Club at Methodist Church Hall Bideford

#### Wednesday 13<sup>th</sup>

**10.15am** Bideford Probus meets at Royal Hotel. Tel 01271 831480

**2.30pm** Memory Lane reminiscences at Bideford Library. Tel 01805 622666

**2.30pm** Bideford Friends at Burton Art Gallery 01805 622666 Ageing Well

**7. 45 pm** Lions Club meets at Robin's Nest, Bideford Football Club. Visiting Lions welcome. 07716008343

#### Thursday 14<sup>th</sup>

**2-5pm** Way of the Wharves project at Royal Hotel, Kingsley Room. project@bbbcdevon.org

**2.45pm** Torridge Male Voice Choir at Deer Park Nursing Home Holsworthy. Contact John Stotesbury 01237 721469

**6.45pm** Westward Ho! Bridge Club at Trinity Church Hall. Tel 01237 470990

#### Friday 15<sup>th</sup>

**10am -12 noon** Memory Cafe at Northam Hall tel 01805 622666

Ageing well

**10am -12 noon** Families for Children. Garden Flat, Castle Hill, Filleigh. 01271 612004

**2-4pm** Sew Together at Baptist Church Westward Ho! 01805 622666 Ageing Well

**7pm** Torridge Male Voice Choir at Bradworthy Church. Contact John Stotesbury 01237 721469

#### Saturday 16<sup>th</sup>

**10am -12pm** Bideford Lions Recruitment morning at Bideford Conservative Club with refreshments. Tel 07716008343

**7pm** Bright Stars Quiz. Northam Methodist Church Hall. £6 pp teams up to 6 Maggie 01237 421956/07773194035

**7.30 pm - 11 pm.** Barn Dance Northam Hall. Bloatertown Band, caller Pete Coe. All welcome. Details 01237 476632

#### Sunday 17<sup>th</sup>

**2pm** Torridge Ramblers' Walk tel 01237 475168

#### Monday 18<sup>th</sup>

#### Wednesday 20<sup>th</sup>

**10-30am** Westward Ho! Crafters and artisans. Baptist Church Hall Westward Ho!

**11am -1pm** Creative memory cafe at Quay meeting room, 5 Danver Court Clovelly Rd Industrial Estate 0781 7976053.

**1.30pm – 3.30pm** Knit and Natter group at Holy Trinity Hall, Westward Ho! 01237 475420

**2.15pm** Meditation at Bideford Library. 01237 476075

**7.45pm** Bideford Phoenix Morris with Winkleigh Morris at Cyder Presse Weare Giffard tel 01237 473798

#### Thursday 21<sup>st</sup>

**2.15pm** Thursday Fellowship at Northam Methodist Hall. Tel 01237 421956

**7.30pm** Bideford Town Band Summer Concert at Westward Ho! Green. If inclement weather, it will be in the Westward Ho! Baptist Church.

#### Friday 22<sup>nd</sup>

**10am – 12 noon** Coffee 'n chat Kingsley Hall, Westward Hotel 01237 421274

**10am -1pm** Lundy Art Group at Blue Lights Hall Appledore

**2-4pm** Sew Together at Baptist Church Westward Ho! 01805 622666

#### Saturday 23<sup>rd</sup>

**2pm** Abbotsham Fete

#### Sunday 24<sup>th</sup>

**10.30am** British Naturalists' Association meet DWT nature reserve Meeth. Bring packed lunch. Contact: Brian Sims 01271 343607

#### Monday 25<sup>th</sup>

**10am -12noon** Appledore Community Art Group at Appledore Community Hall.

#### Tuesday 26<sup>th</sup>

**2pm or 6.30pm** Battlefield Northam talk and tour with Nick Arnold. Northam Library 01237 475111 tkts £2 booked in advance.

#### Wednesday 27<sup>th</sup>

**10.15am** Bideford Probus meets at Royal Hotel. Tel 01271 831480

**2.30pm** Bideford Friends at Burton Art Gallery 01805 622666 Ageing Well

#### Thursday 28<sup>th</sup>

**2-5pm** Way of the Wharves project at Royal Hotel, Kingsley Room. project@bbbcdevon.org

**7.30pm** Bideford Town Band Summer Concert at Westward Ho! Green. If inclement weather, it will be in the Westward Ho! Baptist Church. Contact 01237 475653

**7.45pm** Bideford Phoenix Morris with Red Petticoats at Beaver Inn. Appledore. Tel 01237 473798

#### Saturday 30<sup>th</sup>

**7.30pm** Encore concert at Holy Trinity Church Westward Ho! Free entry with retiring collection.

### Stop Press RNLI events.

**9th June 10am -12pm** Volunteer Coffee Morning at the Appledore Lifeboat Station. - All Welcome

**11th June 9am -11am** - £5. - Breakfast at Slice of Life Westward Ho! **9am - 11am.**

**15th June 7 for 7.30pm** Fashion Show by M & Co Bideford, with Orchadia Hats at St Mary's Church Hall, Appledore. Glass on Bubbly on Entry £6  
Licenced Bar, Tickets from Shop or phone 07989747163. Tickets Limited