



# BIDEFORD BUZZ



A free community newsletter for Bideford, Northam, Appledore, Westward Ho!, Lundy and villages west as far as Hartland

## FLOODS Policy versus Practicality

With flooding very much in the news last month this may be a good time to review the policy of the authorities on flood protection and the effect it is having on the vulnerable Northam Burrows. There are two major factors contributing to flood damage from the sea and these are wave action caused by Atlantic storms and high tides augmented by low pressure weather systems.

Last year until December was a quiet one for tide and wave erosion as there were no exceptionally high tides and generally the storms we had did not happen to coincide with the highest of them, so damage to the pebble ridge and sand dunes was comparatively minor. Even so there were press reports of erosion of the dunes fronting Northam Burrows and some exposure of buried waste materials in the vicinity of the closed municipal

rubbish dump. Temporary repairs carried out on the tip the previous winter had consisted of spreading a geotextile membrane over the eroded edge and covering it with sand and stones to stabilise it.

The first photograph was taken in February 2013 showing a strip of the repaired bank, and this survived through the year until the December storm, when parts of the covering material were washed away.

The second photo was taken on January 4th 2014 just after the biggest storm which combined with a 6.8 metre tide to carry breakers over the rock armour and wash away most of the temporary works, leaving swathes of black geotextile membrane blowing in the wind.

*Chris Hassall's article continues on page 7.*



Picture 1 - Repaired bank 02.02.13



Picture 2 - Same place 04.01.2014

**Which Bideford business won your vote? Go to page 11 to find out** ➡

**CONTACT  
BUZZ**

Bideford Buzz is produced by a team of volunteers with practical assistance from Torridge District Council, Torridge Voluntary Services, Bideford Town Council, Bideford Bridge Trust, Bideford Bay Children's Centre, South West Foundation, Devon County Council, The co-operative Community Fund & Bideford Freemasons. If you are interested in helping to produce or distribute this newsletter we would be pleased to hear from you. Please note that for advertisements there is a charge from £15 per box per month. Cheques payable to Bideford Buzz Newsletter Group. All items for inclusion should be sent by the 15th of the month to the Editor, Rose Arno. Email: [editor@bidefordbuzz.org.uk](mailto:editor@bidefordbuzz.org.uk), Mobile: 07929 976120 or c/o Torridge Voluntary Services, 14 Bridgeland St., EX39 2QE. Visit [www.bidefordbuzz.org.uk](http://www.bidefordbuzz.org.uk).



**North Devon Print**  
DESIGN - DIGITAL - PRINT  
[www.northdevonprint.co.uk](http://www.northdevonprint.co.uk)  
01237 472277

The **co-operative**  
Community Fund



West Quay  
Fundraisers



Bideford Town Council

## More about the Bridge Trust.

Having talked about how the Trust came to be set up and its involvement with property in the town I will now discuss the very wide range of things the Trust has funded.

Trustees have always been interested in education having set up a Commercial School in 1762 and paying the teacher's salary of £12.50 per year. This taught useful subjects to ready young Bidefordians for a merchant's life - it continuing until well into the nineteenth century. In 1823 the Church of England set up a 'National' School in Old Town on the site now occupied by the Fire Station – with the Trust paying the teacher's salary of £35 per year.

Some 15 years later local nonconformists established the 'British' School in Higher Gunstone (the building is still there) and the Trust, in a wonderful example of non-sectarianism, paid the £35 per annum salary of the school's teacher. In 1844 an infant school was built at the top of Honestone Street (today's Angling Club) and the Trust became a generous benefactor to this – as it did when the School of Art on the Quay was built in 1896.

When the new Bideford College first became a solid project I, as chairman of the Trust, was approached by the College head Veronica Matthews wondering whether we would like to 'buy some computers' for the new school. Veronica is an ex-tutee of mine (so is Katie Hopkins but the less I say about her the better I think!) and I was glad that the Trust gave £1/2 million (its largest ever grant) to the scheme.

Today any student living within the parish of Bideford is automatically eligible for £400 worth of book grants if they enter higher education. We also offer bursaries of £500 per annum and even 'hardship grants' to all students in the area. We also fund youngsters going on school trips where teachers wish us to help students from poorer backgrounds.

The Trust also gives backing to a lot of the local sports clubs including rowing, football and rugby – and in the 1720s we even set up a 'Bowling Green' somewhere near the top of High Street – which for me always conjures up a picture of errant bowls rolling down the hill to the river!

One group has always been high up on our list of those we help – the poor. In the eighteenth century we gave £12 annually to help the poor of Bideford as well as one-off payments such as giving £20 in 1766 to buy food and sell it at subsidised prices to the poor 'at this time of dearness of Corn'. In 1831 there was very high unemployment in the town and the Trust put aside two acres of land in Northdown Lane (as it then was) for use as allotments – the first established in Bideford. Again in 1797 William

Richards 'a poor Aged Man' was given 3 guineas (£3.15) 'to buy him a Horse to carry Coals in lieu of his Horse which lately broke his Thigh.' Today we still deal with cases passed on to us by Social Services and various other charities.

The Trust regularly helps with medical issues having put funds towards hospital minibuses, the 'Chestnut Appeal', electric wheelchairs and specialist medical equipment for our local hospital. Back in 1787 (and on two other occasions) we even paid for the town's poor to be inoculated against smallpox – and paid for one poor individual to be treated for his mental illness at 'Bedlam' hospital on London.

Other funding has been directed to fire fighting – in the 1770s we bought the town's first fire engine – really a large pump, and also its second in 1803 when the town council refused to spend the money. More recently we paid for the new toilets in Victoria Park, the Queen's Jubilee fountains on the Quay and helped fund the Jubilee Square scheme.

Finally we have had a long tradition of paying for apprenticeship indentures and the tools needed by these young people. Today such traditional apprenticeships have gone and so we now fund 'Business Start-Ups' where people on low incomes or who are unemployed and who wish to start in business are given a two part grant of £5000 to help them on their way. This scheme has been running for 16 years now and although not every one has been successful many people are now running their own business and employing others.

*You may have been surprised at what the Trust does – certainly, without its benign presence in the town, Bideford and its surrounding area would be by far the poorer. If you wish to know more about the Trust and its history there is a small booklet entitled 'The Long Bridge of Bideford through the centuries' available from Walter Henry's in High Street or the Burton Art Gallery and museum.*

**Peter Christie**

## Tarka Valley Railway Group.

Last year, permission was obtained to begin rebuilding a railway at Torrington station, after many months of talking to Torridge District Council. This has enabled us to embark upon the next hotly anticipated stage of the project....more talking! The core issue is the same - laying 267 metres of track as Phase 1 of the railway so that heritage train rides can begin. This time, it is Devon County Council that has to be acquainted with our aims, so that a lease to occupy their land can be thrashed out.

*To find out more about the Group and its objectives, or to volunteer, look at our website at [www.tarkavalleyrailway.co.uk](http://www.tarkavalleyrailway.co.uk), or call the Puffing Billy on 01805 62305*

# Local History

## The Kingsley Statue

Charles Kingsley was born at Holne on Dartmoor where his father was the Rector. During his childhood Charles lived with his family at Clovelly and it was here that he developed a great interest in all aspects of nature – flora, fauna, and the sea. He was educated at Cambridge and eventually became a priest in the Church of England.

In 1854 Charles came with his own family to live in Bideford residing for a while at The Royal Hotel and then at Northdown House. Here he completed *Westward Ho!*, the novel, and shortly afterwards *Westward Ho!* the place came into existence. He died on 1875 at Eversley in Hampshire. He had made a great impression on the town and it was decided after a visit to Bideford by the Devonshire Association that a memorial to Kingsley be erected in the town. An appeal was launched and £300 was raised. It was decided to place the statue overlooking the River Torridge. The sculptor was Joseph Whitehead of London. It was/is of white marble on a pedestal, with the inscription 'Kingsley'. February 7<sup>th</sup> 1906 was a day of great rejoicing in Bideford, this statue being unveiled by Lord Clinton, followed by the opening of the Free Library and the extension of the Town Hall.

Mike Davy

## 100 Years Ago

- ≡ In the Bideford Gazette during February there is a report of the second annual dinner of the Farmers Union which was held in the New Inn Hotel.
- ≡ The town water supply is still causing problems and Bideford Urban District Council are discussing whether to turn off the water between 10 pm and 6 am in an effort to save a depleted supply reservoir.
- ≡ On 17<sup>th</sup> February Charles Williams announced that he had sold his Cycle and Motor business at 1 Allhalland Street to Mr George Boyle – both the name and premises will still be familiar to many of you.

We are all aware of what is about to happen to Britain in the second half of 1914 but the events that led to World War 1 are far from widely understood. In the forthcoming months we will look at local events, places and people who became casualties of the conflict.

*This month's contribution from the Bideford Archive concludes with a request for some help. We have a considerable amount of 16 mm home movie films and have no idea what they are about and need some way of viewing and cataloguing them. If you are able to help, please contact us on 471714 or come to our offices at Windmill Lane, Northam.*

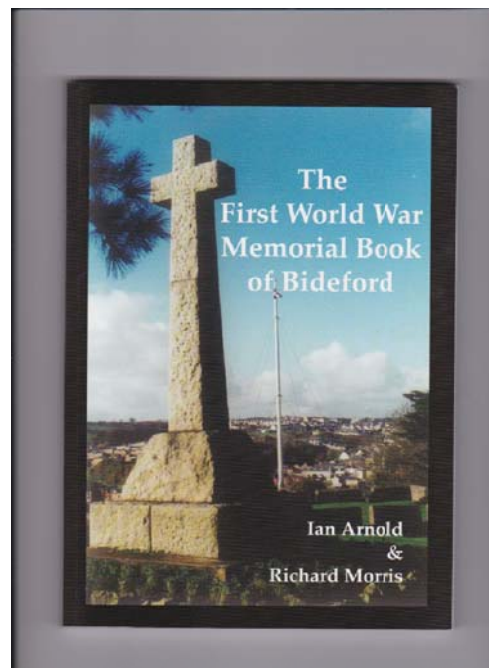
## **The First World War Memorial book of Bideford**, by Ian Arnold and Richard Morris

A well-presented volume, some 15 years in the making, that commemorates the part played by those of Bideford and nearby in the Great War.

There are biographies of many, comprehensive lists of names, as well as a detailed examination of the various Bideford memorials / sources and where they are to be found.

A selection of interesting photographs and appendices on related matters make this a most useful guide for military, local, and family historians, as well as the more general reader. **TA.**

*Co- authors Ian Arnold and Richard Morris have a shared knowledge and interest in military history. The book is available price £12.50 from Ian's shop, Bideford Antiques, in Mill St Bideford.*



# Book News

*The Return* by Victoria Hislop.

Those in the group that had read 'The Island' by the same author were looking forward to tackling 'The Return'. However, although some enjoyed this story based around the Spanish Civil War, no one felt it matched the quality of the earlier work. Some of the group enjoyed the first part of the book but then lost interest. Others found the start to be hard going before being drawn in when the setting moved back in time to the Spanish Civil War.

The start is set in modern times when two female friends, approaching middle age, go to Spain for dance lessons. The dance descriptions are initially interesting but, for some of the group, became overlong and repetitive. When Sonia meets an elderly barman he tells her about the Spanish Civil War: at this point the tone of the tale darkens with descriptions of many atrocities. The story acknowledges that some of these were committed by the left wing republicans but mainly describes those by the right wing Fascists.

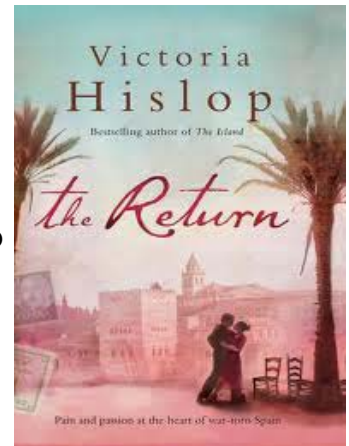
At the centre of the barman's tale is a divided family, a family faced with impossible choices and irrevocably split by their politics. One son is a right wing matador and a supporter of General Franco's fascists, another is a left wing teacher whilst the youngest is gay and therefore a target for the fascists. The daughter is central, providing a link between some of elements in the story. The atrocities witnessed by the family become a vehicle to show how a country can tear itself apart in a civil war.

There was a sense amongst the group, however, that the descriptions of the various characters were rather one dimensional. The validity of descriptions such as 'If the bull had had it in him he might have gored the perfectly rounded buttocks of his pert derriere.' led to some discussion. We also wondered whether some of the coincidences, such as the family photographs and the mother-daughter links, were plausible or not.

*For some, who knew little about the Spanish Civil War, it was a chance to learn more about events at that time. 'Winter in Madrid' by CJ Sansom, was suggested as a potential readd for anyone who wanted to learn more about a terrible period in that country's history*

**Peter Evans**

*Bideford Library Readers' Group meets on the first Wednesday of the month, 2pm at Bideford Library. Next one February 5<sup>th</sup> when we shall be discussing 'Night Music' by Jojo Moyes*



## Other Bideford Library Events in February

### National Libraries Day

Saturday February 8<sup>th</sup>

To celebrate National Libraries Day and the joy of reading, Bideford Library and the Burton Art Gallery are holding a Book Chat in the café between 2.00 and 4.00 pm. If you are already an avid reader or if you've lapsed, but would like inspiration to get started again or even if you just want to understand what makes others love reading so much, why not come along to get some ideas about new authors to try or to enthuse others about your own favourite authors. Library staff will be there to share their favourites with you and they'll also have books for you to borrow and you'll be able to join the library too.

### Free Fridays

Every Friday 9:30-5

Free internet access for up to 2 hours. Help with getting online and finding information. Help with job seeking, CV writing and form filling.

### Feel Better with a Book.

Every Wednesday 10:30-12:00 am

Come and lift your mood through the joy of reading! The aim of the groups is to enable you to enjoy the pleasure and relaxation of listening to great stories and poems - classical and new - and sharing responses with others. No pressure and no reading required. The group is led by an experienced facilitator.

### Every Tuesday 9:30-10:00 am (except school holidays)

For children 0-5 with their carers ; **Story time for under fives.**

Every Thursday. 9:30-10:00 am (except school holidays) Storytime with Music & Rhymes. **With stories, musical instruments and songs.**





## Northern Devon Sustainable Energy C.I.C.

Our drive to reduce the cost of energy to residents of Torridge has taken a further step as we look to recruit energy champions to help and assist householders to

reduce their energy bills. We are offering the chance to under 25s to get training to gain new skills and experience that is certain to impress on any CV.

The Energy Champions will help many residents of Bideford, and its surroundings, make real savings on their energy bills, through finding cheaper tariffs to improving energy efficiency around the home. Those suffering from high bills need not struggle without hope, as there are many simple ways to reduce the cost and loss of energy.

The price of energy will continue to keep rising as the supplies of fossil fuels continue to decline, it is getting ever more difficult to find new reserves to exploit. The faster we consume that energy the faster will be the increases in prices that reduce us all to poverty. Only Northern Devon Sustainable Energy is working to halt the spread of fuel poverty in our area, and you too can do your bit by saving *yourself* money. Our Saving Money on Energy events are happening in and around Bideford, over the next two months. We have sessions every Monday 2pm – 6pm at Bideford Quaker Meeting House, Honestone Street, and others at the Pannier Market and the Atlantic Village.

For up to date information see our Facebook page or call 01237 477 852.



### Floods – Policy v Practicality

*Continued from Page 1*

National policy is to leave the fate of most of the Burrows to natural forces, allowing sand dunes to wash away and reform in altered locations as they have for many centuries.

Unfortunately that does not make allowance for the man-made developments we have allowed to take place on this basically unstable strip of sand, and so policy has had to be adjusted to provide artificial protection for our vulnerable assets; the degree of protection depending on current estimates of the importance, or financial value, of those assets. The three chief areas of concern are the activity and entertainment centres at the south end of the pebble ridge, the hazardous waste tip at the northern end of the Burrows, and the Golf Course in between – and at once we find problems in determining who bears the responsibility for protecting these assets from the sea, let alone how to achieve that protection.

A study was carried out last year on how to protect the waste tip, at least for a few years, and a proposal is to bring in a lot of rock armour, similar to that already deployed for many years part way around, and back it up with scientifically graded pebbles like the pebble ridge itself. That just needs the approval of the appropriate authorities for the expenditure. There is always the possibility that the sea may break through permanently across the far end of the golf course and leave the tip as an island, but that is further into the future and will have to be tackled if or when it becomes imminent. The dunes that once separated the 8<sup>th</sup> Tee from the sea have already gone, ( see photograph) but a considerable expanse of large pebbles has accumulated there, suggesting a (faint?) possibility that it may naturally develop into a further extension of the true pebble ridge, although that may be just for optimists !

There is a lot of work to be done on Northam Burrows in the coming year, and a lot of decision making for whoever is prepared to take responsibility. Meanwhile, there are a couple of spring tides forecast for the first week of March that will equal the highest of this winter, so let's hope they don't coincide with Atlantic storms this time. After that there's a break until 10<sup>th</sup> September when, at 7:40pm., 6.9 metres is forecast which is higher than any since 2010 – could be a nice evening for a walk on the Burrows.

**Chris Hassall**

# Young Buzz

## North Devon's Young Carers

21 young carers have enjoyed a fun activity respite weekend at the Calvert Trust Exmoor thanks to the generosity of local Rotary Groups. The trip was organised by Carewise, a Young Carers support project covering North Devon.

Young Carers are children and young people who help care for a family member or are affected by family illness so that they lose out on opportunities for fun and social interaction that others take for granted. The group enjoyed a busy activity weekend and took part in bushcraft, archery, climbing, abseiling & canoeing.

Young Carer Support Worker Jim Harvey said "The respite provided by trips like this one is absolutely essential to the well being of Young Carers and I would like to thank the Rotary Clubs for their continued support of the Calvert Residential weekends. I would also like to thank the volunteers who supported the young people over the weekend and the Calvert Trust staff for providing a busy and exciting programme."

For more information on Carewise including volunteering please contact the team on 01237 479380

**Jim Harvey** Young Carer Support Worker Mobile: 07800 871 869



## News from Bideford College

A Study Skills group at Bideford College has won the 'Best Fair-Trade Social Enterprise' award at Plymouth's Social Enterprise Week for the work they did last year setting up their own Fairtrade Chocolate Stall and raising £350 for 'Trading Visions'; a charity which supports cocoa farmers in Ghana. The group of nine students (in year 8 at the time) were selected by the College to complete the Social Enterprise Qualification due to their high national curriculum levels in English Maths and Science, but came up with the idea to run a Fairtrade Chocolate Stall themselves. The students worked in lessons on the qualification for 3 months and then ran the stall across three lunchtimes. Upon completion of the three month project students were awarded a SEQ Silver award in Social Enterprise (equivalent to a higher level GCSE); all while in year 8!

The students involved in the project (all now in year 9) were Gaby Fey, Rosa Morgan, Maddy Riley, Anais Seely, Izzy Shaddick, Amy Seaman, Fergal Nesbitt, Lukas Joy and Jamie Norton.

**Kim Jenkin**

# HAPPY DAYS.



**KINGSLEY SCHOOL**  
BIDEFORD

*Outstanding achievements,  
outstanding individuals.*

**[www.kingsleyschoolbideford.co.uk](http://www.kingsleyschoolbideford.co.uk)**

Kingsley School, Northdown Road, Bideford, Devon, EX39 3LY  
t: 01237 426200

NURSERY | PRE SCHOOL | JUNIOR SCHOOL | SENIOR SCHOOL | SIXTH FORM

- ◆ Quiet Rural Location
- ◆ Reduced Rates for Cats from the same Household
- ◆ Discount for Long Stay Boarders

## Old Moor Boarding Cattery



- ◆ Collection & Delivery Available
- ◆ Holiday Home for Cats
- ◆ 'Where the Standard of Food, Health, Hygiene and Happiness is Beyond Compare' TEL: 01237 474069

[www.bidefordcattery.co.uk](http://www.bidefordcattery.co.uk) Littleham Bideford

## Devon Telecom

### Telephone Solutions

#### • Fast Reliable Broadband •

*including BT's new Infinity Network*

#### • New Line Installations •

#### • Wi-Fi •

#### • Phone & Line Repairs •

**01237 488888**

[www.devontelecom.co.uk](http://www.devontelecom.co.uk)

### Quaker Meetings for Worship

are held at 17 Honestone St, Bideford  
(near Pannier market)

**10.30am on Sunday mornings**

All are welcome

Enquiries tel **01237 421549**



Join a warm  
and friendly  
group near you  
today...

**Tuesday 9.30 or 11.30am**

Bideford Angling Club, Honestone Street,  
Bideford

**Tuesday 3.45pm 5.30pm or  
7.30pm**

East the Water School Bideford  
Tel Kate 01409 221873, 07974041548

To celebrate winning  
**'North Devon Pub of the Year'**  
**The Bell Inn at Parkham**  
are hosting a  
Wine tasting Evening on  
6th February 7.30pm to 9.30pm



Tickets £8.50 per person

Book with The Bell Inn  
on 01237 451201



## FLAG

Northern Devon Fisheries Local Action Group

### Catch Up With FLAG

Come along to our drop-in event in Appledore to find out about the FLAG and its projects – from Fishing for History and Seafood Training, to Angling and Maritime Celebrations! You'll also have the chance to try some delicious **free local seafood**, courtesy of Clovelly Fish and Torridge Oysters and Mussels.

### Funding and Support Still Available!

The FLAG can support local community organisations and businesses with projects relating to seafood, fishing, the marine environment and local heritage. So join us to learn about the funding and support still available to you.

#### Drop-In Event Details

- Date: Thursday 6<sup>th</sup> February
- Location: Appledore Blue Lights Hall
- Time: 4:00 – 8:00pm



[www.ndflag.co.uk](http://www.ndflag.co.uk) [flag@northdevonplus.co.uk](mailto:flag@northdevonplus.co.uk)



## Good Age Page



### New hope for people with sensory loss - See Hear on Wheels

2013 has been an exciting year for North Devon's See Hear Centre (SHC). As well as celebrating its 10th anniversary earlier this year, it was also recently awarded a grant from the Big Lottery Fund (BIG) - through their Reaching Communities Programme - for See Hear on Wheels (SHoW), a mobile unit which takes its services out into rural communities.

The fully accessible bus, SHoW, staffed by trained advisors supported by volunteers, has a range of up-to-date sensory equipment on board for people to try. They offer advice about the equipment most suitable for a person's needs, which can then be borrowed allowing the person to try the equipment out in their own home before they buy it. The service is free but they do ask for donations for loans to enable them to keep up-to-date with equipment.

SHoW visits Bideford on the first Thursday of every month, from 2pm to 4pm and can be found at the Pill car park. It also visits the pavilion by the playing fields in Hartland on the same day from 10am – 12 noon.

The See Hear Centre is always open on Tuesdays from 9.00am to 5.00pm for people to drop in to its premises at 19a Alexandra Road, Barnstaple, EX32 8BA.

Appointments can be made for visits on other days. For more information about the See Hear Centre, SHoW or volunteering contact the See Hear Centre on:

Phone: 01271 373236

Text: 0783 151 5809

Email: [seehearnd@livingoptions.org](mailto:seehearnd@livingoptions.org)

Visit: [www.livingoption.org](http://www.livingoption.org)

### After Caring Workshop

**Weds 19<sup>th</sup> February 2014 10am – 2.30pm**  
**Instow Community Rooms. Free.**

For Carers/former carers aged 50+ where the person they care for has gone into residential care or passed away. This workshop will look at loss of the caring role and its impact, bereavement, relationships, the home environment, work/leisure activities – with the idea it's OK to want/have things for yourself. Please contact Alison, After Caring Co-ordinator, 01237 420134 to book a place or for more details or email [alisonf@torridgecvcs.org.uk](mailto:alisonf@torridgecvcs.org.uk)

**We are  
a local  
family  
owned**



**Domiciliary/ Homecare business,  
managed by experienced nurses.  
We provide supported care within  
your home to help maintain your  
independence.**

#### Services we provide

Personal care \ Respite care/Night sitting \ Life limiting/Palliative care \ After hospital care Assistance with medication \ Enabling and companionship \ Meal preparation \ housekeeping/laundry

**Unit 1 Trading Centre, Honestone street,  
Bideford, EX39 2DJ**

**Tel: 01237 424005**

**Email: [info@mytime2care.co.uk](mailto:info@mytime2care.co.uk)**



#### **Devon Homelink**

**Emergency alarm system:** are you or someone you know worried about being able to contact help in an emergency?

**What is Devon Homelink:** A small alarm unit fits to your telephone and works with a pendant that can be worn about the house or garden. The wearer is able to summon help at the press of a button.

No upfront fees or installation charge just a great value weekly rental. Call us on 0800 083 7553 to find out more and arrange your free home demonstration.

**In association with North Devon  
Homes Ltd.**



# Miscellany

## Bideford Music Club hosts South African baritone

Baritone Njabulo Madlale was born in Durban and with his accompanist Will Vann he will be singing to Bideford Music Club for their February concert.

Njabulo left South Africa with a scholarship to study at London's Guildhall School of Music and Drama where he gained his Bachelor of Music (Hons.) and Masters Degree Post Graduate opera course and continued for a further year at Cardiff International Academy of Voice. He was a Britten Pears Young Artist and a Samling Foundation Scholar and was also helped and supported by other Trusts and Foundations during his studies.

They will be performing a wide selection of music at Bideford Methodist Hall, High Street, on Wednesday, 12<sup>th</sup> February at 7.30 pm. Tickets are available at the door £12.50 (students free)

## Appledore singers – donation to the North Devon Hospice

The Appledore Singers are delighted to announce that, as a result of a highly successful Christmas concert and by carol-singing in – and around – Bideford, they have raised a total of £1254.17 for the North Devon Hospice. They would like to thank all those whose combined efforts made these events so successful. If you, too, enjoy singing and would like to join, rehearsals are every Monday night from 7-9pm at Appledore Primary School. For more information contact Pam Beechey on 01237 420652

**'seek a smile thro' song**

## Bideford Town Band

Would You Like to Learn To Play a Brass Instrument? Can You Already Play?

All Welcome Friendly Atmosphere

Main Band Monday & Thursday 7.45pm - 9.30pm

Beginners Group Tuesdays 6.30pm

Free Group Tuition Instrument Available Free Uniform (£20 deposit)

Non-playing Supporters always welcome too in a variety of roles!

[www.bidefordtownband.co.uk](http://www.bidefordtownband.co.uk) or see us on facebook

**contact Becky on 01237 475653**

## Friends of Appledore library

Having become something of an annual fixture, this year's Spring talks will all take place in the recently refurbished upstairs room at the Appledore Library, The Quay, Appledore on the last Monday of each month through to April - commencing at 7.30pm.

On Monday 24<sup>th</sup> February local councillor and General Gordon buff Jim Jackson will reveal the secret link between this man best known for his exploits in the Sudan - and Westward Ho! - in an illustrated talk titled 'General Gordon – Local Hero'

## Caleb Jarvis

Memories of Caleb Jarvis, who died in December:-

*From his sister Verity:-*

*'We want people to remember what a great artist, poet and musician Caleb was and how at his best he had a very silly fun loving side to him and a smile that when, on the rare occasions it came out, it was like the sun shining..'*

She continues - 'We are also donating copies of his books 'Messages from a Jumbled Journey,' and 'Teeth, Tail, Filigree, Garden and Sail' to the Link Centre to sell for funds.

His poems included 'One more hip to the hurrah of Christmas'; 'To plumb the depth'; 'All there ever was'. But personally my favourite is 'For You.'

## Toffee Apples (His first poem)

Kiss the trees Kiss the skies

Kiss Mother Nature

Sending love a sweet surprise

Loving the trees loving the skies

loving the girl that greets my demise.

# ***SAMARITANS***

Samaritans is a confidential emotional support service.

The service is available 24 hours a day for people who are experiencing feelings of distress or despair, including those which may lead to suicide.

**LOCAL BRANCH:  
BARNSTAPLE**

**01271 37 43 43**

NATIONAL HELPLINE No.  
**08457 90 90 90**

Real People – Real Lives - Real Difference

Charity No. 261807

Motorcycle  
MOT's  
£29.65

**DEVON  
WHEELS  
2WORK** MOTORCYCLES

For all your  
Motorcycling needs  
Sales, Service and Repair  
Collection & Delivery service available

We continue to loan scooters and motorcycles to help get people to employment and education at a subsidised rate.



Halwill Junction

Tel: 01409 220357

[www.devonwheels2work.co.uk](http://www.devonwheels2work.co.uk)

## **SOUNDS INTERESTING CDs and DVDs**

49 Mill Street, Bideford EX39 2JR

**01237 238370**

**[soundsinteresting@onebillinternet.co.uk](mailto:soundsinteresting@onebillinternet.co.uk)**

*"Downloads are ok but nothing compares with the joy of giving or receiving or indeed owning a real album. You also get the added bonus of sleeve notes!"*

**T-Shirts**

**Hoodies**

**Mugs**

**and other licensed merchandise**

**INDEPENDENT, LOCAL &  
PROUD OF IT.**

**Our head office is right in in Bideford,  
not in Luxembourg !**



**HAPPY CAFÉ**

The Old Tennis Pavilion,  
Golf Links Road, Westward Ho!

### **Friday Lunch Club**

Served between 12 and 2pm

£4.50 for two set courses  
or £6 for three set courses  
(includes soup of the day )

Lunch club booking essential, please call 07773 679559



### **Thursday Family Kitchen**

Served between 12 and 2pm

Freshly made soup and a roll £1.50  
(half price for children)



Happy Café & Café Cycles

Cooked by trainees as part of  
accredited kitchen skills course.

[www.seize-the-moment.net](http://www.seize-the-moment.net)



THE PRINCE'S  
COUNTRYSIDE  
FUND

## Bideford Town Council – Bideford Pannier Market

### Additional Friday Market Trading Day

Following the success of a pilot (additional) Friday Trading day at the Bideford Pannier Market, held during the November and December months, the Market Management Committee have agreed to continue the initiative.

The Market Stalls will be free to all Market Traders trading within the Bideford Pannier Market Hall for all the Fridays during the months of January and February 2014.

New Traders are welcome.

All those trading within the Market Hall must have Public Liability Insurance and necessary food safety certification.

Contact the Market Administrator:

E Mail: [deputyTC@bideford-tc.gov.uk](mailto:deputyTC@bideford-tc.gov.uk) / Tel: (01237) 428817  
or visit the Pannier Market and ask for the Market

At Bideford Pannier Market we all work as a team and have worked VERY hard to fill the market full of new and interesting traders whilst not stepping on the toes of any established stall holders. The market now has most of the things the town would expect from a market 'under one roof'. New stalls include a roast dinner roll takeaway, a developing deli stall, new craft stalls, household and kitchenware, tools and a pet stall (starting soon) as well as the established fruit and veg stall, eggs, jams and pickles, sweets, haberdashery, book, toys and jewellery stalls. Customer service is good and we are all as helpful in getting in what people want as we can be. '

**Tamsin Dawn**

### Pannier Market Hopper

There is now a bus supplied by Torridge Community Transport and funded by Devon County Council which will form a figure of eight circuit giving access to the market. TCTA is a local charity whose aim is to address the gaps in local transport both for individuals and communities. For more information about the route please phone 01237 425522 or go to [www.torridge-cta.org.uk/panniemarket.html](http://www.torridge-cta.org.uk/panniemarket.html). Areas served are Kenwith castle, Westward Ho!, Appledore, Northam, East the Water Bideford Pannier Market Bideford Quay and Morrisons

\*\*\*\*\*

### Love Bideford love the shops.....

We asked BOB (Businesses of Bideford) on Facebook to nominate their favourite Bideford Business for February. Below are some of the nominations...

*I love my clothes brought from **Chocolate** in Mill Street. The owner is always so friendly and patient. There are often bargains to be had too! So nice to have well selected, beautiful clothes and accessories on my doorstep* **Sarah Srisaeng**

*Would like to nominate **Steven & Laurent hairdressers** please for their fab styling, great chat & overall awesomeness!* **Marilyn Moore**

*I would like to vote for Bideford Cobblers and Keys. The staff are always very friendly and helpful. They went out of their way for a friend of mine who had her walking stick stolen by youths while out for a walk and gave her a new walking stick of her choice free of charge. They do a great deal for Bideford town helping with the late night Christmas shopping and the turning on of the Christmas lights. They also help a lot of local charities and are turning the town red on Valentines day.* **Jo**

**Bowden**

It was a very close call and thank you for everyone who took part.

In the event there were 2 winners, **MS Autos** 'for their fantastic professional service' and as someone said 'their cute dog Kizzy!' and the 'in town winner', by a very close margin, **Samantha's Nature Nutrition. Apothecary/Nature's Nutrition**. 'After trying everything for my son's cracked chin including steroids they cured it with a simple, natural shea butter. Wonderful ladies.' **Buzz will give both businesses one free eighth of a page ad each, subject to space. Please contact us to arrange either via [editor@buzz.org.uk](mailto:editor@buzz.org.uk) or tel Buzz on 07929976120**



## Bideford Film Society

Friday 31 January and Saturday 1 February **47 Ronin** (12A) 119 minutes  
 Friday 7 and Saturday 8 February **The Railway Man** (15) 116 minutes  
 Friday 14 and Saturday 15 February **Mandela: Long Walk to Freedom** (12A) 146 minutes  
 Friday 21 and Saturday 22 February **The Wolf of Wall Street** (18) 180 minutes  
 Friday 28 February **If War Should Come** 102 minutes. The second in an occasional series of selections of historic footage from British Film Institute recreating on the big screen what life was like in Britain in the early years of WWII.  
 Saturday 1 and Sunday 2 March **American Hustle** (15) 138 minutes  
 All of the above films will be screened at the Edgehill Theatre, Kingsley School. Doors open 7.00pm, film starts 7.30pm.

## News from the Burton Art Gallery & Museum

Have you ever heard of James T.A. Osborne? Probably not: he was a modest man, who never promoted himself properly, and never had a show of his own work; he was happy teaching others the skills he had learned, and now and again put one of his own creations into exhibitions.

James was born at Nirfield, Sussex, in 1907, the son of a Scottish farmer, who migrated to England just before James was born. Brought up on a farm, he loved to go out into the countryside to sketch. Drawing wild life, particularly birds, was his delight, and this talent led him to study at Hastings School of Art. He concentrated on sculpture, and eventually won a scholarship to the Royal College of Art. Once there, he discovered print making, and decided that this media suited him better. His talent was soon recognised, and he went to Rome, having won the Prix de Rome Scholarship. Returning to England in 1932, he taught at Regent Street Polytechnic School of Art. During those years he exhibited at the Royal Academy and the Royal Society of Painter-Etchers and Engravers, and started the Royal Society of Wild Life Artists. Luckily, his artwork was left in private hands, and by chance the owners visited the Burton and were offered this chance to show Osborne's stunning work.

When you visit the Burton, you will see some of the most beautiful examples of print-making: such strong lines, such detail, such confidence in every print. You will also see the blocks, both box-wood and lino, scored both delicately and boldly, from which the prints are made.

The Burton is proud to be the first Gallery to give James T.A. Osborne his first solo exhibition, but, too late for him - sadly, he died in 1979. This is an exciting exhibition, and you have until 14<sup>th</sup> February to see it.

To follow, the children take over. As usual, the Torridge Schools' Exhibition will fill the walls, the plinths, the pillars, the whole area with wonderful work by the youth of the district, from nursery to sixth form. They never fail to produce exciting creations, inspired by some excellent local teaching staff. The exhibition begins on January 20<sup>th</sup>, and continues until March 10<sup>th</sup>.

At the same time as the children are entertaining us, you will find another exhibition – 'Pots, Fish and Ships' which begins on 22<sup>nd</sup> February, and continues until 24<sup>th</sup> March. This seems to speak for itself, and sounds as if we are in for some quirky, humorous works of art.

Meanwhile, the Friends invite you to the Burton to participate in an evening of discovery: on 19<sup>th</sup> February, at 7.30 p.m. you are allowed behind the scenes at 'The Investiture Procedure at Buckingham Palace', revealed by Graham and Linda Taylor. Admission £5 at the door.

This is just a glimpse of what the Burton has to offer the visitor; the Cafe du Parc continue to feed body and soul from their delicious menu; the Craft Gallery is filled with unique and beautiful works by regional craftsmen and women; the Museum is a fountain of local knowledge, plus a very special collection of North Devon ceramics, and the Shop and Tourist Information Centre in the foyer are there to serve you. Admission is free; if you wish to give a donation, that will be appreciated. There is also a donations box in the Craft Gallery for the Friends Crafty Kids for Happy New Year,

**Diana Warmington,**

Friends of the Burton Art Gallery & Museum. (New members welcome – ask at Reception)

*Buzz was very pleased to receive a cheque from the Friends as a token of their appreciation. Diana writes:-*

*'Please pass on our thanks to the editorial and printing staff for their excellent publication and long may it continue to inform the people in our area of all that the town has to offer'*







# THE SHIPPING NEWS



Ship (Loaded and discharged at Yelland)	Registered Flag Owners	From	To	Arrived	Sailed	Crew	Cargo loaded
<b>Aressa</b> Built 1978 EX Baltiyskiy 105	St Petersburg Russian	Warrenpoint	Lubeck	<b>28/11/13</b>	<b>30/11/13</b>	Russian	2250 tons
<b>Pride*</b> Built 2002 ex Wani Pride 05 Accumersiel 02	Gibraltar German	Glensanda	Briton Ferry	<b>29/12/13</b>	<b>07/01/14</b>	Russian UKrainian	3000 tons chippings

*\*This vessel was originally due before Christmas;she loaded at Glensanda on the 19<sup>th</sup> then went to anchorage at Loch Linnie due to the bad weather,sailed down the Irish coast as far as Drogheda where again she had to shelter due to adverse weather conditions. Berthed on the 29<sup>th</sup> awaiting rising tides,completed discharge on evening of 30<sup>th</sup>, but due to weather could not sail until 7/1/14. **No loadings at Bideford.***

**Oldenburg** has been to Sharpness **12.11.13** for drydocking, returns to service March/April apart from a few cargo runs during the winter. Returned to Bideford **3.12.13**

**Arco Dart** at Appledore **16.11.13 17.11.13 1.12.13 2.12.13**

The Irish patrol vessel, **LE Samuel Beckett** being built at Appledore is still due to go on trials at the end of January It is with regret that we received news before Christmas of the death of the owner of the **Kathleen and May**, Steve Clarke OBE ; everybody connected with Buzz send their condolences to his family. According to the Journal website the cruise ship **Prisendam** is due off Ilfracombe 26 July for visit ; has been here before (subject to weather conditions )

## Bristol Channel Observations

**14.11.13** at 13.47 cargo vessel **Algarve** 36120 tons d.w, owners Camargue Schippahrtsgesell Germany, outward bound from Portbury, having sailed at 08.25.

**15.11.13** at 08.35 cargo vessel **YongXing** 22307 tons d.w, owners Chinese-Polish Joint Stock Shipping Co China/Poland, outward bound from Newport, having sailed at 03.49

**16.11.13** at 15.15 cargo vessel **Yangtze Ambition** 32088 tons d.w. owners Tianjin CMB Sea Passion Shpg Shanghai China, inward bound for Avonmouth. Seen again outward bound **23.11.13** at 15.00, having sailed at 09.23.

**17.11.13** at 09.51 vehicle carrier **Mignon** 28127 tons d.w, owners Wallenius Wilhelmsen Norway & Sweden, inward bound for Portbury. At 13.34 vehicle carrier **Emerald Leader** 10819 tons d.w owners Nippon Yusen Kiasha of Japan inward bound for Portbury.

**22.11.13** at 11.55 container vessel **DS Agility** 13856 tons d.w, owners DS Activity UND DS Agility Germany outward bound from Portbury, having sailed at 09.01. At 12.45 tanker **Tarantella** 46764 tons d.w, owners Whitefin Shipping Co Ltd Houston USA, inward bound for Portbury.

**23.11.13** at 15.54 hrs bulk carrier **Burgia** 79403 tons d.w, owners Burgia Schifffahrts Germany outward bound from Portbury, having sailed at 10.09.

**24.11.13** at 09.20 vehicle carrier Euro Spirit 15483 tons d.w owners Nissan Motorcar Carriers Japan, inward bound for Portbury. At 12.52 vehicle carrier **Grande Italia** 12594 tons d.w owners Grimaldi Line of Italy, outward bound from Portburyhaving sailed at 07.27 .

**27.11.13** at 09.06 vehicle carrier **Grande Mediteranno** 18427 ons d.w, owners Grimaldi Line of Italy inward bound for Portbury. At 11.10 vehicle carrier **Grande Colonia** 12292 tons d.w owners Grimaldi Group of Italy, inward bound for Portbury.

**6.12.13** at 14.09 vehicle carrier **Grande Spagne** 12594 tons d.w owners GrimaldiLine of Italy inward bound for Portbury.

**17.12.13** at 14.00 vehicle carrier **Global Spirit** 16493 tons d.w owners NissanMotor Car Carriers Japan inward bound for Portbury.

Various ships anchored at Clovelly on the **23/24.12.13** **Scot Ranger** outward bound from Swansea and sailed on the **24th** the other vessel was the **Stadum** which sailed off to Newport.

**26.12.13** at 13.02 the bulk carrier **Cape Stefanic** 172566 tons d.w, outward bound from Port Talbot. At 14.15 cargo vessel **Birch 1** 24306 tons d.w owners Birch Shipping Ltd Hong Kong, inward bound for Avonmouth. Also seen

again outward bound on **31.12.13** at 14.30, having sailed from Avonmouth at 07.37. Again between the **29.12.13 /1.1.14** various ships anchored off Clovelly as follows the **Vanguard** outward from Sharpness, the **Burgtor** outward from Ireland, and the **Selene Prahm** outward from Cardiff all sheltering from the adverse weather.

**2.1.14** at 10.55 vehicle carrier **Glovis Cougar** 22532 tons d.w owners GL Cougar Shipping Inc Marshall Islands outward bound from Portbury having sailed at 08.38

**10.1.14** at 09.11 vehicle carrier **Grande Ellade** 18440 tons d.w owners Grimaldi Line of Italy inward bound for Portbury. At 10.30 bulk carrier **AP.Jadran** 79336 tons d.w owners Atlan Ice Panamax Corp Dubrovnik Croatia outward bound from Portbury having sailed at 05.27 . At 13.48 bulk carrier Panamax Sterling 78932 tons d.w owners PX Sterling Marine SA Greece, inward bound for Portbury.

**13.1.14** at 08.40 cargo vessel **Chipoibrok Galaxy** 30.330 tons d.w owners Chinese Polish Joint Stock Shipping Co China and Poland inward bound for Newport

**14.1.14** at 10.48 bulk carrier **Boronia K** 33677 tons d.w, owners Tri Bulkships S.A Japan, outward bound from Newport having sailed at 05.32

*Norman*

# Buzz Word

Send us your Buzzes. (Address on front page).

## Specialist/ Therapist Books Offered

It's me again, the lady with the oak tree! Unfortunately the site in Northam was not to be, but the local National Trust gentlemen have come to the rescue and my lovely young oak is going to National Trust parkland in Devon. It is not easy for me to get to but it is a perfect site for the tree which can be left to grow to its full potential.

Could you now help me find a home for some very good text books?

I have been spring cleaning early, (or late?! ) and although most of my books went to the Hospice shop there are some specialist/therapist text books, in very good condition which I would like to offer to anyone who would perhaps make a small donation to the ND Hospice for them.

They are for Cranio-Sacral Therapy and E.F.T Techniques, plus anatomy texts.

It would be a shame to bury these amongst others as they are of little interest except to people studying or practising these techniques.

Thank you very much for an excellent local magazine,

**Marianne Richards**

01237 479721

## Lucy's Diary - the follow up.

*In December/ January Buzz Cynthia Snowden told us about this local book she received a copy of. She writes...*

I have since been in touch with the UK publishers ([www.polperropress.co.uk](http://www.polperropress.co.uk)) whose Managing Editor, Jeremy Johns, is related to the Johns' branch of Lucy's American family. Jeremy tells me that cousins of his, in Illinois, transcribed the original diary and sent a copy of the transcription to him. The book is available on his website.

My Canadian 'sailing/knitting' cousin Linda, who started this ball rolling, can be found on:

[http://www.savedbyart.com/onedaydesigns/?page\\_id=8](http://www.savedbyart.com/onedaydesigns/?page_id=8)

And, finally, Jen has now made contact with Brenda to learn that she tucked a copy of *Lucy's Diary* into Auntie Marg's suitcase as a surprise when she returned home to Wales in 2008. Incidentally,

Lucy's family visited a Barnstaple store whilst staying at Instow and spent £22 on clothes and presents - £2217 in today's money, according to the Bank of England Inflation Calculator!

**Cynthia Snowden**

## Calling all North Devon Knitters!...

Get together with friends or family to take part in the 17th annual North Devon Knit & Natter! On or around 19th February, you could hold a two-hour knit in the location of your choice, and raise sponsorship in aid of North Devon Hospice. Nearly 80 groups from across the area took part last year, and raised an amazing £15,000. This time we

would like to do even better! Could you help us reach our fundraising target? This fun, sociable event is open to anyone, whether experienced knitters or complete beginners. So why not get involved, have some fun and support your local hospice. **For more information, please call Rebecca on 01271 347204 or email [rebeccaworth@northdevonhospice.org.uk](mailto:rebeccaworth@northdevonhospice.org.uk). Download your entry form at [www.northdevonhospice.org.uk](http://www.northdevonhospice.org.uk)**

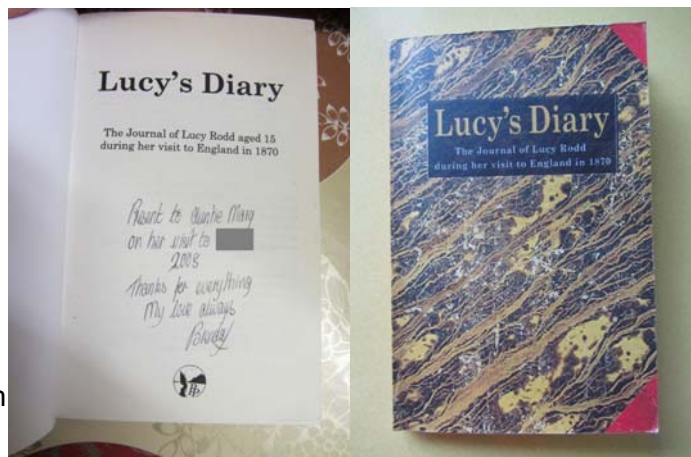
## Northam and Westward Ho! and district through time

Thank you very much, Rose, for reviewing our Northam and Westward Ho! book in this month's Buzz – it was really kind of you to do it.

Buzz is always full of interesting articles and a great credit to you.

Best wishes

**Julia Barnes**



## Yule Logs

I was delighted to read the article about the yule logs in the December edition.

I can't make any guess as to who wrote it, but I must offer an explanation for the apparently ungrateful attitude of the recipient of the logs.

It may be that this customer was more knowledgeable about the burning qualities of different timbers than the writer imagined, because as soon as he mentioned that he was cutting up a dead elm tree for yule logs I thought "Oh dear, someone's in for a disappointment.")

I wonder whether any reader is familiar with the old rhyme about firewood logs and could write in with the full version. All I can remember is three couplets, one of which could explain the surly manner of the writer's customer.

*Ash new or ash old, is fit for a king with a crown of gold.*

*Elmwood burns like the churchyard mould, even the very flames are cold*

*Ash wet or ash dry, a queen may warm her slippers by.*

The poem goes on to list the burning qualities of all the common timbers but I can't remember any more, and with wood burning back in fashion it would be a really useful source of information.

**Chris Hassall.**

## Infants School, East the Water

I read the Buzz every month by month, and find it very interesting. I would like to mention a couple of things regarding the Infant school at East the Water. I started in the school in 1943, Firstly they had a underground boiler room, run by (Sid Shortridge), also in front of where the dining room would eventually be placed, (as we had to walk over to Gunstone then for our meals) were two underground air raid shelters with steps leading up and down for safety reasons. The top of the shelters were covered by Nissan style roofs. The teachers that were there then were, namely Miss Anderton (Headmistress), followed by Mr H Lucas, Miss Hilary Braddick, Miss Ida Bow, Miss Moase, Miss Smale,

**G.D. Ford**

## From Russia ... to Shebbear

Old Shebbearian and journalist Kieron Bryan visited Shebbear School on Tuesday 7<sup>th</sup> January to catch up with friends. Kieron has recently been the subject of world-wide media attention after being detained in Russia for the last few months on charges of piracy and hooliganism for filming a Greenpeace protest at a Russian oil rig. Following months of campaigning by family, friends and members of the UK Government, Kieron was granted amnesty and returned to the UK on December 27<sup>th</sup>, much to the relief of his parents Ann and Andy, who work at Shebbear College. Kieron said 'it's like a story that happened to someone else, it feels like a dream'. He added 'I'm so thankful to everyone in Shebbear for the support they gave my parents

## February Diary

### Friday 1<sup>st</sup>

**7.45pm** Modern Sequence Dancing, Kingsley Hall, Westward Ho!

01769 540309

**8pm** Ceilidh Club, Northam Hall. 476632

**8pm** Norman Watt-Roy & Friends @ the Palladium. £12. 478860

### Saturday 2<sup>nd</sup>

**9am-2pm** Farmers Country Market at Atlantic Village.

**10am-12pm** Coffee Morning at Holy Trinity Church, Westward Ho! £1.25

**3pm** Bideford AFC v Bashley

**7.30pm** Film 'The Great Gatsby' at Littleham Village Hall. 420372

### Sunday 3<sup>rd</sup>

**11am-5pm** Westward Ho! 150. Exhibition of historic maps & pictures at Kingsley Hall, Westward Ho!

### Monday 4<sup>th</sup>

**2-4pm** Lip-reading classes at Burton Art Gallery Reading Room. 07794390807

**7.15pm** Appledore Singers rehearse at Appledore Primary School. 420657. **4.45-9.30pm** Bideford Band rehearse

### Tuesday 5<sup>th</sup>

**10am-1pm** Lavington Church coffee and lunches

**2-3.30pm** Salvation Army 'Fun & Fellowship' Club meets at Baptist Church Upper Hall.

**7.30-9pm** Samba Baia Rehearsal at Community Arts Network, 13 Rope Walk. New members welcome.

**7.45pm** Bideford AFC v Poole Town

Palladium Club *Jam Night*

### Wednesday 6<sup>th</sup>

**10.30am** Parkinson's UK meets at Ethelwynne Brown Close. 478128

**11am-1pm** Creative (Memory) Café at Pollyfield Centre. 07817976053

**2.00pm** Bideford Library Readers' Group. 476075

**7.30pm** Bideford Folk Dance Club meets at Northam Hall. 423554

**7.30pm** Bideford Music Club at Bideford Methodist Church Hall. Anthony Brown & Leo Nicholson.

**7.30pm** The Two Rivers Wind Ensemble Rehearsal at Bideford Band Room 01271 860061

**8pm** Bideford Phoenix Morris rehearse at Baptist Church, Mill St. 473798 **Diary Continued on next page.**

# February Diary 2014 *continued*

## **Friday 7<sup>th</sup>**

**7.45pm** Modern Sequence Dancing, Kingsley Hall, Westward Ho! 01769 540309

**8pm** Ceilidh Club, Northam Hall. 476632

## **Monday 10<sup>th</sup>**

**7.15pm** Appledore Singers rehearse at Appledore Primary School. 420652

**7.30pm** Bideford Stamp Club AGM, Kingsley Hall, Westward Ho! 472101

**7.45pm** Bideford Band rehearses at Band Room nr Victoria Park. 475653

## **Tuesday 11<sup>th</sup>**

**10am** Macular Society meets at Burton Art Gallery. 474128

**10am-1pm** Lavington Church coffee and lunches.

**10.30am** Walking for Health – rotation of 5 walks in Northam, Torrington & Westward Ho!. 421528

**2-3.30pm** Salvation Army 'Fun & Fellowship' Club meets at Baptist Church Upper Hall.

**2-4pm** Epilepsy Action Group meets at The Corner House Café, Boutport St, Barnstaple. 07875577428

**6.30pm** Bideford Band Beginner's Group at Band Room. 475653

**7.30pm** Northam Choral Society rehearses at Northam Methodist Hall.

**7.30-9pm** Samba Baia Rehearsal at Community Arts Network, 13 Rope Walk. New members welcome.

Palladium Club *Jam Night*

## **Wednesday 12<sup>th</sup>**

**10.15am** Probus Club at Royal Hotel.

**10.30am** Walking for Health in Victoria Park. Meet at Cafe du Parc. 421528

**11am-1pm** Creative (Memory) Café at Pollyfield Centre. 07817976053

**7.30pm** Bideford Folk Dance Club meets at Northam Hall. 423554

**7.30pm** Bideford Music Club at Bideford Methodist Church Hall with Njabulo Madlale & Will Vann. £12.50. 423112

**7.30pm** The Two Rivers Wind Ensemble rehearsal at Bideford Band Room 01271 860061

**8pm** Bideford Phoenix Morris rehearse at Baptist Church, Mill St. 473798

## **Thursday 13<sup>th</sup>**

**10.15am-12pm** Northam Men's Forum, Northam Methodist Hall. 478123

**10.30am** Walking for Health -Tarka Trail. Meet Clarence Wharf Car Park. 421528

**2.15pm** Thursday Fellowship, Northam Methodist Hall.

**7pm** Hartland Aikido Club for over 18s at Bucks Cross Village Hall.

**7.45pm** Bideford Band rehearses at Band Room nr Victoria Park. 475653

## **Friday 14<sup>th</sup>**

**2pm** Devonshire Association at Burton Art Gallery. 459224

**7.30pm** Abbotsham WI meets at Abbotsham Village Hall. 474711

**7.45pm** Modern Sequence Dancing

Kingsley Hall, Westward Ho!

01769 540309

**8pm** Ceilidh Club, Northam Hall 476632

## **Saturday 15<sup>th</sup>**

**9am-2pm** Farmers' Country Market at Atlantic Village.

**3pm** Bideford AFC v St Albans

**8pm** Folk duo 'Blackheart' at Woolsery. Tickets £8 - 451627

## **Sunday 16<sup>th</sup>**

**10am-1pm** Antiques & Collectors Fair at Instow Parish Hall supporting RNIB.

Admission 20p. 01271 812711

**1.10pm** Torridge Ramblers walk.

01805 622183

## **Monday 17<sup>th</sup>**

**7.15pm** Appledore Singers rehearse at Appledore Primary School. 420652

**7.30pm** Appledore Amateur Radio Club, Appledore Football Social Club. 473251

**7.45pm** Bideford Band rehearses at Band Room nr Victoria Park. 475653

## **Tuesday 18<sup>th</sup>**

**10am-1pm** Lavington Church coffee and lunches

**10am-12pm** Coffee Morning at Baptist Church Hall in aid of Women's World Day of Prayer. 50p. 472357

**10.30am** Walking for Health – rotation of 5 walks in Northam, Torrington & Westward Ho!. 421528

**2-3.30pm** Salvation Army 'Fun & Fellowship' Club meets at Baptist Church Upper Hall.

**6.30pm** Bideford Band Beginner's Group at Band Room. 475653

**7.30pm** Northam Choral Society rehearses at Northam Methodist Hall.

**7.30-9pm** Samba Baia Rehearsal at Community Arts Network, 13 Rope Walk. New members welcome.

Palladium Club *Jam Night*

## **Wednesday 19<sup>th</sup>**

**10am-2.30pm** After-Caring Workshop at Instow Community Rooms. 420134

**10.30am** Walking for Health in Victoria Park. Meet at Cafe du Parc. 421528

**11am-1pm** Creative (Memory) Café at Pollyfield Centre. 07817976053

**11.00am** Walking for Health - 2 miles around Instow. Meet Sandhills car park

**7.30pm** Bideford Folk Dance Club meets at Northam Hall. 423554

**7.30pm** The Two Rivers Wind Ensemble Rehearsal at Bideford Band Room.

**8pm** Bideford Phoenix Morris rehearse at Baptist Church, Mill St. 473798

## **Thursday 20<sup>th</sup>**

**10.15am-12pm** Northam Men's Forum, Northam Methodist Church Hall. Carolyn King 'West Country Ambulance Service'.

**10.30am** Walking for Health along Tarka Trail. Meet Clarence Wharf Car Park. 421528

**2.15pm** Thursday Fellowship, Northam Methodist Hall.

**7pm** Hartland Aikido Club for over 18s at Bucks Cross Village Hall.

**7.45pm** Bideford Band rehearses at Band Room nr Victoria Park. 475653

## **Friday 21<sup>st</sup>**

**10am-12pm** Northam Reminiscence cafe at Northam Hall. 459337

**7.45pm** Modern Sequence Dancing, Kingsley Hall, Westward Ho!

01769 540309

**8pm** Ceilidh Club, Northam Hall. 476632

## **Monday 24<sup>th</sup>**

**7.15pm** Appledore Singers rehearse at Appledore Primary School. 420652

**7.30pm** Talk by Jim Jackson 'General Gordon – Local Hero'. £2 477422

**7.45pm** Bideford Band rehearses at Band Room nr Victoria Park. 475653

## **Tuesday 25<sup>th</sup>**

**10am-1pm** Lavington Church coffee and lunches

**10.30am** Walking for Health – rotation of 5 walks in Northam, Torrington & Westward Ho!. 421528

**2-3.30pm** Salvation Army 'Fun & Fellowship' Club at Baptist Church Upper Hall.

**6.30pm** Bideford Band Beginner's Group at Band Room. 475653

**7.30pm** Northam Choral Society rehearses at Northam Methodist Hall.

**7.30-9pm** Samba Baia Rehearsal at Community Arts Network, 13 Rope Walk.

Palladium Club *Jam Night*

## **Wednesday 26<sup>th</sup>**

**10.15am** Probus Club at Royal Hotel

**10.30am** Walking for Health in Victoria Park. Meet at Cafe du Parc. 421528

**11am-1pm** Creative (Memory) Café at Pollyfield Centre. 07817976053

**7.30pm** Bideford Folk Dance Club meets at Northam Hall. 423554

**7.30pm** The Two Rivers Wind Ensemble Rehearsal at Bideford Band Room

01271 860061

**8pm** Bideford Phoenix Morris rehearse at Baptist Church, Mill St. 473798

## **Thursday 27<sup>th</sup>**

**10.30am-12pm** Northam Men's Forum, Northam Methodist Hall. Colin Pomeroy 'Operation Overlord'. 478123

**10.30am** Walking for Health along Tarka Trail. Meet Clarence Wharf Car Park. 421528

**2.15pm** Thursday Fellowship, Northam Methodist Hall.

**7pm** Hartland Aikido Club for over 18s at Bucks Cross Village Hall.

**7.45pm** Bideford Band rehearses at Band Room nr Victoria Park. 475653

## **Friday 28<sup>th</sup>**

**7pm** Quiz & Supper in aid of RNLI at Appledore Social Club. Teams of 6.

Tickets £7 –book on 01271 346560

**7.45pm** Modern Sequence Dancing, Kingsley Hall, Westward Ho!

01769 540309

**8pm** Ceilidh Club, Northam Hall.